

ART +  
OBJECT





COVER: 87 RICHARD MALOY BLUE FLOWERS  
RIGHT: 5 JIM SPEARS UNTITLED LIGHT BOX  
LEFT: 23 JANET LEACH STONWARE VASE  
ABOVE: 8 PETER ROBINSON I EXIST I AM NOT ANOTHER I AM  
RIGHT 109 MARTIN POPPELWELL SKULL

# CONTEMPORARY ART + OBJECTS

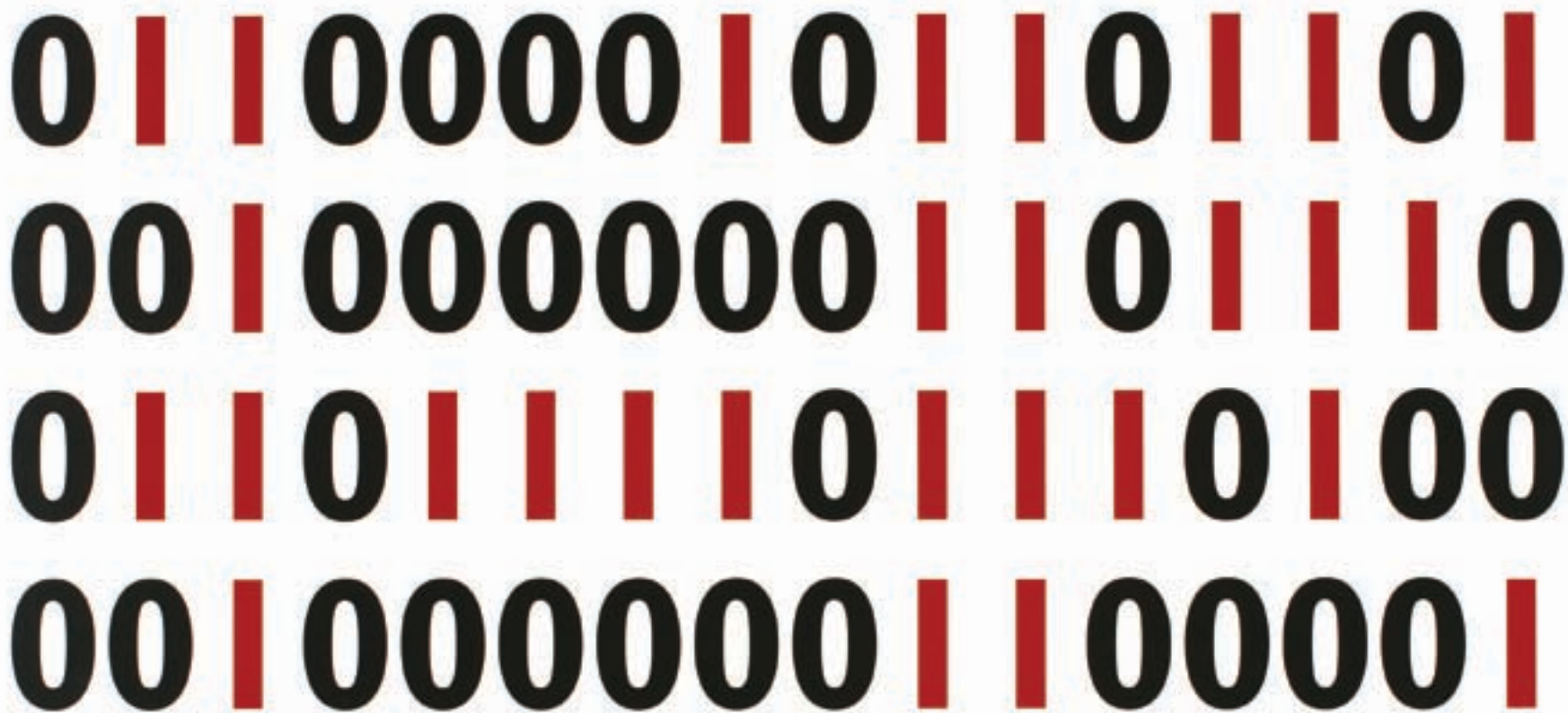
**OPENING PREVIEW** THUR 4TH JUNE 5PM - 8PM

**VIEWING** FRI 5<sup>TH</sup> JUNE - THUR 11<sup>TH</sup> JUNE

**AUCTION** THUR 11<sup>TH</sup> JUNE 2009 AT 6.30PM

**VENUE** 3 ABBEY ST NEWTON AUCKLAND

|    |  |
|----|--|
| 02 | INTRODUCTION                                     |
| 04 | APRIL HIGHLIGHTS IMPORTANT PAINTINGS + SCULPTURE |
| 06 | MAY HIGHLIGHTS THE DRUMMOND COLLECTION           |
| 10 | THE JOHN PERRY COLLECTION / FORTHCOMING AUCTION  |
| 11 | THE ROSS SUTTON COLLECTION / FORTHCOMING AUCTION |
| 12 | 20TH CENTURY DESIGN / FORTHCOMING AUCTION        |
| 13 | OBJECTSPACE LIMITED EDITIONS / EXHIBITION        |
| 15 | AUCTION VIEWING INFORMATION                      |
| 16 | CONTEMPORARY ART                                 |
| 59 | OBJECTS  |
| 81 | SUBSCRIBE / GIFT                                 |
| 82 | CONTACTS   |
| 83 | CONDITIONS OF SALE                               |
| 84 | ABSENTEE BIDDING                                 |
| 85 | INDEX OF ARTISTS                                 |



WELCOME TO A+O'S FIRST CONTEMPORARY ART+OBJECTS CATALOGUE FOR 2009. THIS AUCTION COMES OFF THE BACK OF THE MOST SUCCESSFUL AUCTION IN THE COMPANY'S HISTORY. OUR IMPORTANT PAINTINGS AND SCULPTURE AUCTION SAW MAJOR WORKS SELLING AT ALMOST EVERY PRICEPOINT – THE MOST NOTABLE EVENT FOR A+O AND THE MARKET WAS THE SALE OF TWO \$200 000 PLUS PAINTINGS IN THE ONE EVENING, A DEMONSTRATION THAT COLLECTORS WILL ALWAYS BE ATTRACTED TO WORKS OF THE HIGHEST CALIBRE. PLEASE TURN TO PAGE 4 TO SEE A SELECTION OF THESE SALE HIGHLIGHTS ILLUSTRATED.

ONE CONSEQUENCE OF THE SUCCESS OF THIS AUCTION HAS BEEN THE HIGH QUALITY OF ARTWORK CONSIGNED FOR A+O'S NEXT MAJOR ART AUCTION ON JULY 30 – TURN TO PAGES 8 & 9 FOR A PREVIEW OF THIS UPCOMING AUCTION.

THE FIRST TWO LOTS OF OUR APRIL AUCTION WERE WORKS BY THE TWO ARTISTS THAT REPRESENT NEW ZEALAND AT THIS YEAR'S VENICE BIENNALE: JUDY MILLAR AND FRANCIS UPRITCHARD. THE A+O TEAM IS PLEASED THAT OVER \$20 000 WAS RAISED FROM THE SALE OF THESE WORKS TO ASSIST IN PAYMENT OF COSTS RELATING TO THE INSTALLATION OF ARTWORK IN THE ARTISTS RESPECTIVE VENICE LOCATIONS. A+O'S FRONT OF HOUSE MANAGER LEIGH MELVILLE WILL BE TRAVELLING WITH THE VENICE PATRONS GROUP IN JUNE AND WILL BE COMPILING A REPORT ON THE EVENT THAT WILL BE A FEATURE OF OUR NEXT CATALOGUE IN JULY.

THE CONTEMPORARY ART SECTION OF THIS CATALOGUE INCLUDES MAJOR WORKS BY BOTH OF THE NEW ZEALAND REPRESENTATIVE ARTISTS AND A POINT OF INTEREST WILL BE TO COMPARE THE UPCOMING INSTALLATIONS WITH THESE TWO EARLIER WORKS BY THE ARTISTS. JUDY MILLAR'S LARGE CANVAS OF 2002 (LOT 52) IS A CLASSIC EXAMPLE OF HER GESTURAL ABSTRACTION – BURSTING WITH ENERGY AND THE MAKER'S MARK. FRANCIS UPRITCHARD'S RARE BRONZE (LOT 47) IS ALSO A WORK ABOUT GESTURE. IN THIS CASE THE INSCRUTABLE SIGNAL OF THE PROPHET OR PHILOSOPHER.

ONE OF THE RAREST ITEMS EVER OFFERED AT A+O CAN BE FOUND IN THE OBJECT CATALOGUE. ERNEST SHUFFLEBOTHAM'S LOVING CUP (LOT 168) HAS ARRIVED TO US DIRECT FROM THE FAMOUS CERAMICIST'S FAMILY IN LONDON AND IS BELIEVED TO BE THE ONLY SIGNED ITEM TO EVER BE OFFERED AT AUCTION - RESEARCH HAS YET TO UNCOVER A COMPARABLE EXAMPLE.

IT IS A GREAT PLEASURE FOR US TO BE ABLE TO OFFER THESE RARE AND UNIQUE WORKS IN OUR FIFTH CONTEMPORARY ART+OBJECT CATALOGUE. THE CONTINUED CONFIDENCE IN THIS SECTOR OF THE ARTMARKET PIONEERED BY A+O AT AUCTION INDICATES THE CONTINUING ENGAGEMENT BY COLLECTORS IN THE CONTEMPORARY ART SCENE. IF ANY FURTHER PROOF OF THIS WAS REQUIRED THE RECENT AUCKLAND ART FAIR (MAY 1 & 3 OF THIS YEAR) AGAIN DELIGHTED OVER TWELVE THOUSAND VISITORS AND SCORES OF OFFSHORE COLLECTORS, MANY OF WHOM WILL BE MAKING VENICE THEIR NEXT PORT OF CALL.

# One giant leap.



The all-new, technologically advanced Lexus RX350 has arrived.

Why is the all-new RX350 such an excellent personification of forward thinking? Perhaps it's the way it innovatively blends the styling of an SUV with the luxury you've come to expect from Lexus. With a newly enhanced 3.5 litre engine and Active Torque Control All-Wheel Drive, you'll have outstanding power coupled with superb response and handling. A Vehicle Dynamics Integrated Management system and full airbag package are just some of the innovative safety features you'll find as standard inside. And, with a four year warranty and full maintenance service plan, even the after sales service is class-leading. The new RX350. It's one giant leap for motoring.

 **LEXUS**  
THE PURSUIT OF PERFECTION

[www.lexus.co.nz](http://www.lexus.co.nz)

HIGHLIGHTS FROM THE IMPORTANT PAINTINGS  
AND SCULPTURE AUCTION APRIL 2009



BILL HAMMOND FLAG \$255 595

TONY FOMISON STUDY FOR DANCING SKELETON \$133 450

COLIN MCCAHON WATERFALL \$239 525

GUY NGAN HABITATION \$9240

ALL PRICES INCLUDE BUYER'S PREMIUM





# an icon is reborn

The iconic Hotel DeBrett is nestled in the heart of Auckland city, at the crossroads of Shortland Street's business and High Street's fashion precincts, just two short blocks from the waterfront. Our 25 rooms and suites are individually decorated in a mid-century modern style, showcasing contemporary New Zealand arts and crafts, overlaid with

21st century comforts. We have lovingly restored the famous art deco 'House Bar' and created a casual dining environment in our 'Kitchen' restaurant. We welcome you to experience a mix of calm and bustle in central Auckland, and share our special home away from home, with personal yet professional service.

2 High Street, Auckland p +64 9 925 9000  
e [reservations@hoteldebrett.com](mailto:reservations@hoteldebrett.com) w [hoteldebrett.com](http://hoteldebrett.com)

hoteldebrett



A SELECTION OF HIGHLIGHTS FROM  
 THE JIM DRUMMOND COLLECTION  
 & THE NEW ZEALAND + DECORATIVE ARTS AUCTION MAY 09



TITIAN STUDIOS \$2325



NAIVE BUST \$3100



CROWN LYNN \$975



TWIG TABLE \$2585



JANE BRENKLEY \$4140



ALBERT CRUM \$1725



WHARETANA WARE \$5460



NZ BRICK CO \$485



CROWN LYNN \$1610



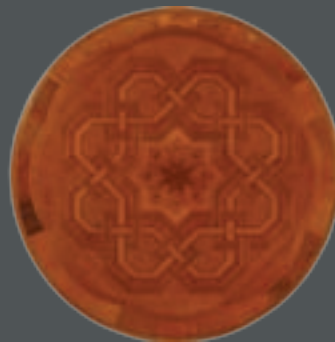
BOHEMIA WARE \$945



CLARICE CLIFF \$4600



CHINESE VASES \$1925



ANTON SEUFFERT \$21925



RENE LALIQUE \$1775



KEITH MURRAY \$2875

ALL PRICES INCLUDE BUYERS PREMIUM



## **New Release: Invivo Central Otago Pinot Noir 2008**

**“Aromas of black cherries, subtle coffee crème, red currants and dark plums. Palate is intense and immediately mouth filling.”**

Rob Cameron, Invivo Winemaker



**Invivo Wine New Zealand  
Exclusive wine supporter  
for the New Zealand presence  
at the 53rd Venice Biennale 2009**

[www.invivowines.com](http://www.invivowines.com)



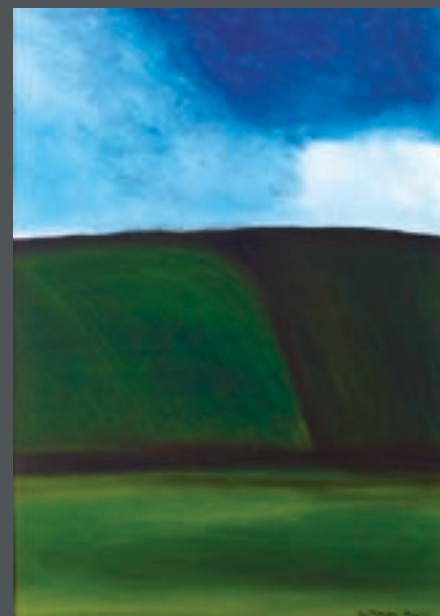
# IMPORTANT PAINTINGS AND SCULPTURE JULY 30

ENTRIES CLOSE: JUNE 24 2009

COLIN McCAHON  
BUTTERCUP FIELDS  
FOREVER IV  
POLYVINYL ACETATE ON  
PAPER, 1967  
770 x 550MM  
\$190 000 - \$250 000

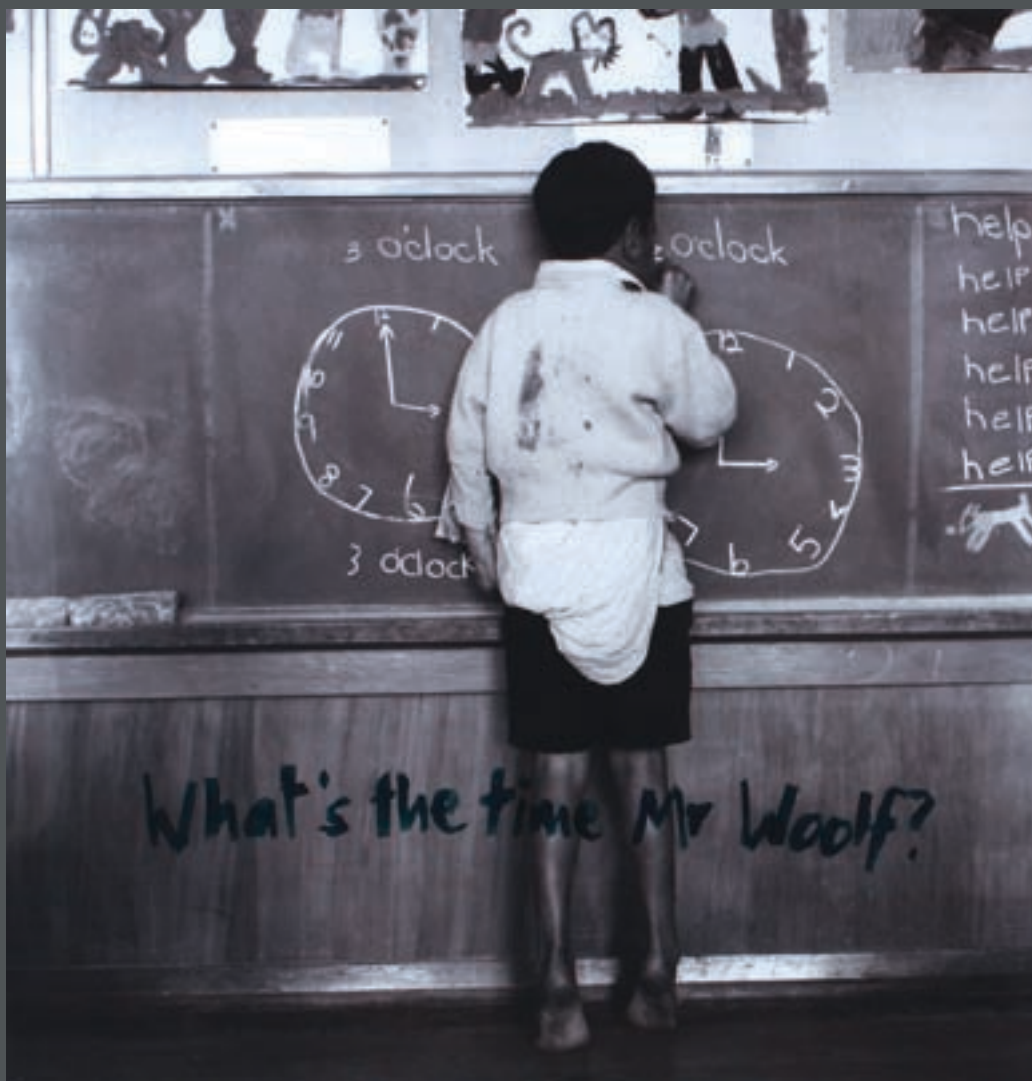
DALE FRANK  
FLYING SOLD DAWNS  
BASTING THE TRUTH/  
MILF'S & DILF'S  
WAITING 4 U/AUCKLAND  
LANDSCAPE  
ACRYLIC AND VARNISH ON  
CANVAS, 2004  
2000 x 2600MM  
\$55 000 - \$75 000

RALPH HOTERE  
BLACK WINDOW: TOWARDS  
ARAMDANA  
OIL ON BOARD IN COLONIAL  
SASH WINDOW FRAME, 1981  
1130 x 710MM  
\$225 000 - \$300 000



## THE ODYSSEY GROUP COLLECTION

THE JULY 30<sup>TH</sup> CATALOGUE WILL ALSO INCLUDE THIS IMPORTANT BUYING COLLECTIVE. ASSEMBLED OVER TEN YEARS, THE ODYSSEY GROUP COLLECTION INCLUDES MAJOR WORKS BY ELIZABETH THOMSON, JOHN PULE, MICHAEL PAREKOWHAI, SARA HUGHES, GAVIN HURLEY, GRAHAM FLETCHER, GRETCHEN ALBRECHT, STANLEY PALMER, PETER ROBINSON, YUK KING TAN, EMILY WOLFE AND RICHARD MCWHANNELL.



MICHAEL PAREKOWHAI  
\$9000 - \$14 000

WHAT'S THE TIME MR WOOLF ?

TYPE C PRINT AND APPLIED MARKER PEN, 2004/05 1025 x 1025MM

THE  
**JOHN PERRY**  
COLLECTION

TUESDAY 11<sup>TH</sup>  
AUGUST 2009



THE ROSS SUTTON | SATURDAY 22<sup>ND</sup>  
TOY COLLECTION | AUGUST 2009



ROSS SUTTON WILL BE WELL KNOWN TO TOY COLLECTORS THROUGHOUT NEW ZEALAND AS THE FORMER OWNER OF HAMILTON BASED CAROUSEL ANTIQUES.

ART+OBJECT IS PLEASED TO OFFER ROSS' PERSONAL COLLECTION OF SUPERIOR EXAMPLES FROM ALMOST EVERY TOY CATEGORY:

DINKY CORGI MATCHBOX FUN HO! LINCOLN TOYS TONKA TRIANG KENNER STAR WARS TRAINS INCLUDING HORNBY (O AND OO GAUGE) TRIX TWIN BRITAINS FIGURES AND ACCESSORIES TINPLATE INCLUDING LEHMANN BANDAI METTOY HAJI SCHUCO CELLULOID FIGURES DOLLS TEDDY BEARS MECHANICAL TOYS PELHAM MARIONETTES AND HAND PUPPETS



20TH CENTURY | THURSDAY 20<sup>TH</sup>  
DESIGN | AUGUST 2009



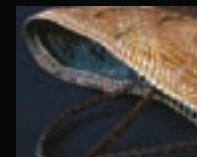
GREGORY SMITH CLEAR CHAIR 2009 [WORKING TITLE] L/E 1/2 PROTOTYPE \$1500 - \$3000

# Objectspace Limited Editions

Art+Object  
5—11 June  
2009



*Objectspace Limited Editions* is an opportunity for serious collectors of contemporary New Zealand craft and design to acquire exclusive works by leading New Zealand makers.



**Tangimoe Clay**  
Kete Hukahuka, Black  
- \$600  
EDITION OF 3  
Kete Hukahuka, Brown  
- \$600  
EDITION OF 3



**Richard Stratton**  
Snakes and Ladders  
Steeple Cup - \$2,400  
EDITION OF 10



**Peter Lorimer**  
Damascus Steel  
Knife Set - \$2,500  
EDITION OF 15



**Vita Cochran**  
Hand Work Bag - \$950  
EDITION OF 10  
Glove Compartment Bag  
- \$950  
EDITION OF 10



**Joe Sheehan**  
Survival Kit  
EDITION OF 12 - Sold Out



**Ann Robinson**  
2006 Form - \$16,000  
EDITION OF 12

**objectspace**

8 Ponsonby Rd, Auckland  
P O Box 68-762  
Newton  
Auckland 1032

T 09 376 6216  
F 09 376 6246  
E [info@objectspace.org.nz](mailto:info@objectspace.org.nz)  
[www.objectspace.org.nz](http://www.objectspace.org.nz)

**creative nz**  
ARTS COUNCIL OF NEW ZEALAND / TOI AHTAHARA

VALUATION SERVICES

RECENT COMMISSIONS INCLUDE:

TE PAPA TONGAREWA SPECIAL PROJECTS

WAITAKERE CITY COUNCIL PETER SAUBIER SCULPTURE COLLECTION

CITY GALLERY WELLINGTON TE WHARE TOI THE PARIHAKA COLLECTION

AUCKLAND CITY LIBRARIES TAMAKI PATAKA KORERO PHOTOGRAPHY + CARTOGRAPHY

ROTORUA MUSEUM TE WHARE TAONGA O TE ARAWA TAONGA, FINE + APPLIED ARTS

CHRISTCHURCH ART GALLERY TE PUNA O WAIWHETU FINE ARTS COLLECTION

NEW ZEALAND HISTORIC PLACES TRUST VARIOUS NORTH ISLAND PROPERTIES

AUCKLAND WAR MEMORIAL MUSEUM TAMAKI PAENGA HIRA SPECIAL PROJECTS

SARJEANT GALLERY TE WHARE O REHUA WHANGANUI FINE ARTS COLLECTION

HAWKES BAY MUSEUM + ART GALLERY COLLECTION OF TAONGA, FINE + APPLIED ARTS

THE PORTAGE TRUST FINE + APPLIED ARTS COLLECTION

ERNST & YOUNG AUCKLAND, WELLINGTON, CHRISTCHURCH ART COLLECTION

AUCKLAND CITY COUNCIL AOTEA SQUARE SCULPTURE

IAG/NZI CORPORATE COLLECTION

TO DISCUSS COMMISSIONING AN ART+OBJECT VALUATION CONTACT JAMES PARKINSON,

09 354 4646 MOB 021 222 8184 JAMES@ARTANDOBJECT.CO.NZ



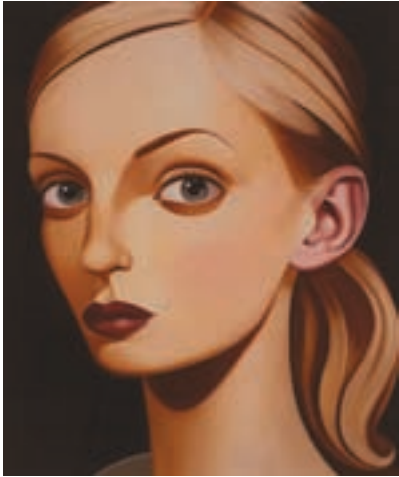
# CONTEMPORARY ART AND OBJECTS

THURSDAY 11 JUNE 6.30PM

3 ABBEY STREET, NEWTON AUCKLAND

## VIEWING

|           |         |         |            |
|-----------|---------|---------|------------|
| THURSDAY  | 04 JUNE | OPENING | 5PM – 8PM  |
| FRIDAY    | 05 JUNE |         | 9AM – 5PM  |
| SATURDAY  | 06 JUNE |         | 11AM – 4PM |
| SUNDAY    | 07 JUNE |         | 11AM – 4PM |
| MONDAY    | 08 JUNE |         | 9AM – 5PM  |
| TUESDAY   | 09 JUNE |         | 9AM – 5PM  |
| WEDNESDAY | 10 JUNE |         | 9AM – 5PM  |
| THURSDAY  | 11 JUNE |         | 9AM – 1PM  |



1. PETER STICHBURY  
HEATHER TRAYMONT  
GICLEE PRINT, EDITION OF 50  
SIGNED AND DATED 2006  
570 x 470MM  
\$3500 - \$5000

2. HEATHER STRAKA  
ACE OF CLUBS  
OIL ON CANVAS ON BOARD  
TITLE INSCRIBED, SIGNED AND DATED 2003 VERSO  
PROVENANCE: PRIVATE COLLECTION, WELLINGTON  
835 x 548MM  
\$3000 - \$5000

3. ANGELA SINGER  
TREASURE HUNT  
JET BEADS AND COMPOUND  
120 x 520 x 60MM  
EXHIBITED: 'INSIDES OUTSIDES', DEDIPUS REX GALLERY, AUCKLAND, 24  
AUGUST - 17 SEPTEMBER 2004.  
510 x 155 x 60MM  
\$800 - \$1200

4. GREGOR KREGAR  
GNOME  
CLEAR CAST GLASS AND LIGHTBOX  
SIGNED WITH ARTIST'S INITIALS G. K AND DATED '05  
325 x 160 x 110MM  
\$1000 - \$2000

5. JIM SPEERS  
UNTITLED  
VINYL, ACRYLIC AND FLUORESCENT LIGHT  
463 x 710 x 200MM  
\$6000 - \$9000

6. L.BUDD  
IF I MOVE FOWARD I WILL DESTROY MYSELF  
FOUND OBJECTS, MIXED MEDIA, ACRYLIC AND PASTEL  
TITLE INSCRIBED, SIGNED AND DATED 1995 AND INSCRIBED 1-2  
580 x 420 x 420MM  
\$4000 - \$6000







7. JOHN REYNOLDS

HERE IS BELLADONNA THE LADY OF THE ROCKS THE LADY OF SITUATIONS

MONOPRINT ON LINEN

TITLE INSCRIBED, SIGNED AND DATED 1999

1850 X 2280MM

\$6000 - \$9000

8. FRANCIS UPRITCHARD

MAN AND TREE

MODELLING MATERIAL, ACRYLIC AND FOUND OBJECTS, 2007

SIGNED AND DATED '97

150 X 255 X 180MM INSTALLATION SIZE VARIABLE

\$8000 - \$12 000





9. JULIAN DASHPER

CLAM

ACRYLIC ON PAPER

TITLE INSCRIBED, SIGNED AND DATED 1991 VERSO

700 x 595MM

\$4000 - \$6000

10. RICHARD REDDAWAY

UNTITLED

MIXED MEDIA

1200 x 1200 x 380MM

\$4000 - \$7000

11. STEVE CARR

BIG CHEESE

FOAM AND PLASTIC, EDITION OF 12 (2006)

1400 x 2100MM

\$800 - \$1400



12. ANGELA SINGER  
UNTITLED  
MIXED MEDIA  
SIGNED AND DATED 2002  
123 x 128 x 128MM  
\$500 - \$800

13. ANGELA SINGER  
UNTITLED  
MIXED MEDIA  
SIGNED AND DATED 2002  
165 x 110 x 110MM  
\$500 - \$800

14. ANGELA SINGER  
UNTITLED  
MIXED MEDIA  
SIGNED AND DATED 2002  
290 x 170 x 170MM  
\$700 - \$1200

15. ANGELA SINGER  
UNTITLED  
MIXED MEDIA  
SIGNED AND DATED 2002  
230 x 115 x 115MM  
\$500 - \$800

16. ANGELA SINGER  
UNTITLED  
MIXED MEDIA  
SIGNED AND DATED 2002  
290 x 170 x 170MM  
\$700 - \$1200

17. ANGELA SINGER  
UNTITLED  
MIXED MEDIA  
SIGNED AND DATED 2002  
220 x 132 x 132MM  
\$500 - \$800



15



14



13



17



12



16



18. JOHN REYNOLDS

BLIND

OIL PASTEL ON FOUND SCREENPRINT MOUNTED  
TO CANVAS

TITLE INSCRIBED; TITLE INSCRIBED, SIGNED AND  
DATED 1998 VERSO

350 X 280MM

\$800 - \$1400



19. JOHN REYNOLDS

THE BLIND EAT MANY A FLY

OIL PASTEL ON FOUND SCREENPRINT MOUNTED  
TO CANVAS

TITLE INSCRIBED; TITLE INSCRIBED, SIGNED  
AND DATED 1998 VERSO

350 X 280MM

\$800 - \$1400



20. JOHN REYNOLDS

THE BLINDMAN'S WIFE NEEDS NO PAINTING

OIL PASTEL ON FOUND SCREENPRINT MOUNTED  
TO CANVAS

TITLE INSCRIBED; TITLE INSCRIBED, SIGNED AND  
DATED 1998 VERSO

350 X 280MM

\$800 - \$1400



21. SERAPHINE PICK

UNTITLED

INK AND ACRYLIC ON PAPER

SIGNED AND DATED '97

285 X 210MM

\$600 - \$900

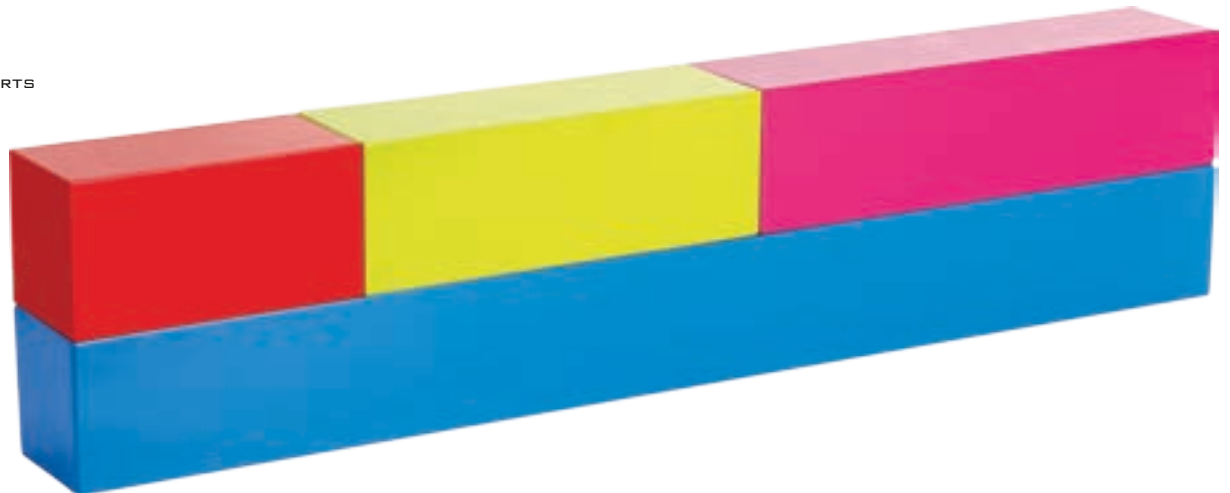
22. PETER ROBINSON  
3.125%  
MIXED MEDIA  
TITLE INSCRIBED  
145 x 65 x 65MM  
\$1000 - \$2000



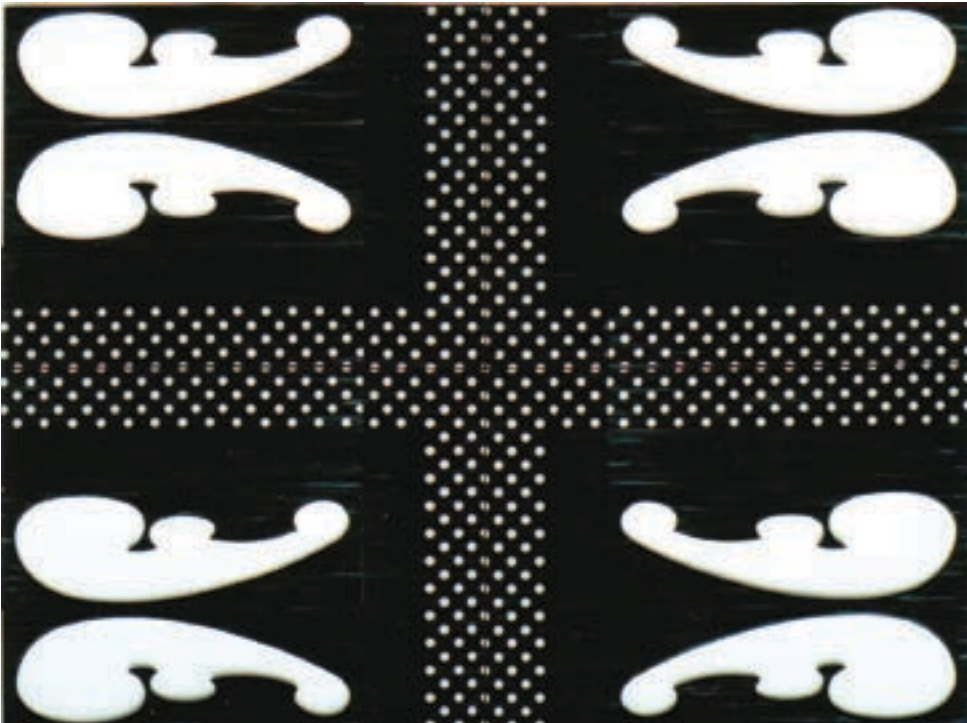
23. ELIZABETH THOMSON  
UNTITLED (BEETLE)  
PATINATED BRONZE  
1010 x 295 x 300MM  
\$5000 - \$8000



24. MICHAEL PAREKOWHAI  
ATARANGI  
TWO POT PAINT ON ALUMINIUM, FOUR PARTS  
200 x 800 x 100MM  
\$12 000 - \$18 000







25. WILLIAM DUNNING  
 ANTIPODEAN EMBRANCHMENT  
 CHARCOAL AND ACRYLIC WASH ON PAPER,  
 TRIPTYCH  
 TITLE INSCRIBED AND SIGNED VERSO  
 1055 X 750MM  
 \$6000 - \$9000

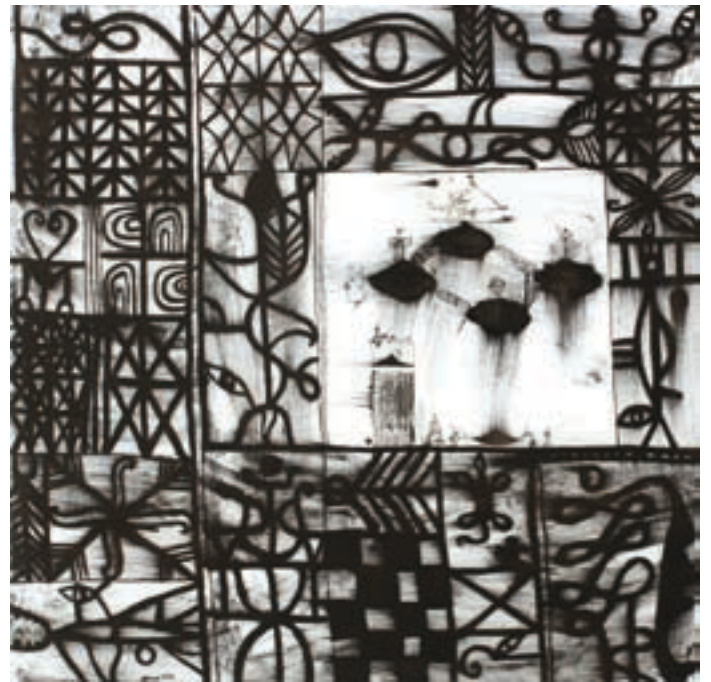
26. RUSSELL MOSES  
 MATAURI BAY SITE PACIFIC XIII  
 ACRYLIC ON BOARD, POLYPTYCH  
 TITLE INSCRIBED, SIGNED AND DATED '02 VERSO  
 560 X 1250MM INSTALLATION SIZE  
 \$9000 - \$13 000



27. CHRIS HEAPHY  
WALKING AIDS  
ACRYLIC ON CANVAS, DIPTYCH  
TITLE INSCRIBED, SIGNED AND DATED  
1997  
500 X 850MM OVERALL  
\$8000 - \$14 000

28. MICHAEL SHEPHERD  
UNTITLED, STILL LIFE WITH LP RECORD  
OIL ON BOARD  
INSCRIBED 86  
450 X 575MM  
\$8000 - \$12 000





29. PETER ROBINSON  
I EXIST I AM NOT ANOTHER I AM  
LAMDA PRINT MOUNTED TO ALUMINIUM, EDITION OF 5  
(2001)  
2190 X 1195MM  
\$10 000 - \$15 000

30. JOHN PULE  
MOUGATOTE  
OIL AND INK ON CANVAS  
INSCRIBED AND DATED 2005  
1000 X 1000MM  
\$14 000 - \$20 000



31. SIMON KAAH

UNTITLED

OIL ON BOARD

SIGNED AND DATED 2003

1625 x 1200MM

EXHIBITED: 'MŌ TĀTOU: NGĀI TAHU WHĀNUI', TE PAPA  
TONGAREWA, WELLINGTON, JULY 8 2006 – AUGUST 9  
2009.

PROVENANCE: PRIVATE COLLECTION, SOUTH ISLAND

\$14 000 - \$20 000

33. REUBEN PATERSON

I DON'T WANT NO COVERASATION, I JUST WANT

EJACULATION

GLITTERDUST ON CANVAS

TITLE INSCRIBED, SIGNED AND DATED 2003 VERSO

1220 x 1216MM

PROVENANCE: PURCHASED BY THE CURRENT OWNER FROM GOW

LANGSFORD GALLERY, SYDNEY IN 2004

\$10 000 - \$15 000



32. BILL RILEY

HUSH NO. 1

ACRYLIC ON ALUMINIUM

TITLE INSCRIBED, SIGNED AND DATED

2003 VERSO

1200 x 2400MM

\$7000 - \$10 000



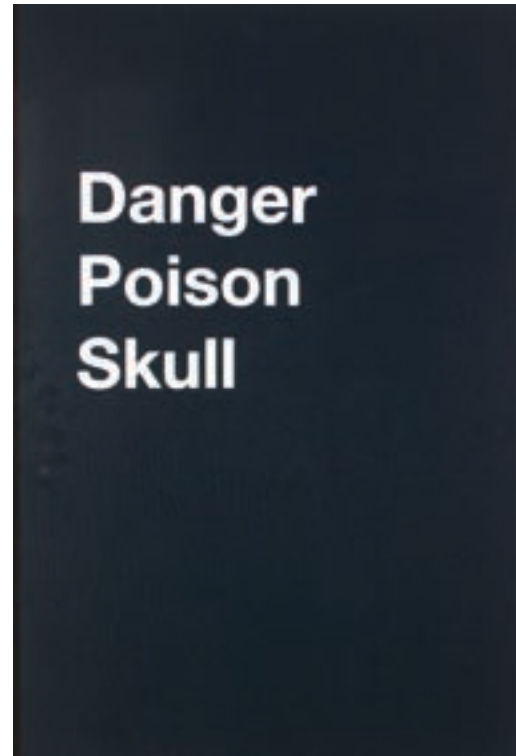
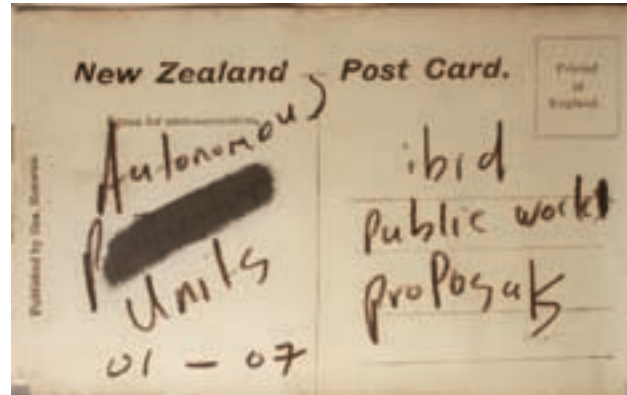


34. GIOVANNI INTRA  
 THANK GOD IT'S SPRING  
 CHARCOAL ON PAPER, DIPTYCH (1990)  
 TITLE INSCRIBED  
 1020 X 1520MM  
 \$1000 - \$2000

35. SERAPHINE PICK  
 UNTITLED  
 OIL AND GRAPHITE ON PAPER ON BOARD  
 SIGNED AND DATED 1994; ORIGINAL  
 CLAYBROOK GALLERY LABEL AFFIXED  
 VERSO  
 1055 X 750MM  
 \$4000 - \$6000

36. JUDY DARRAGH  
 RIVERSCAPE  
 MIXED MEDIA  
 TITLE INSCRIBED, SIGNED AND  
 DATED 1990 VERSO  
 825 X 970 X 160MM  
 \$2500 - \$4000





37. ET AL.  
 IBID. PUBLIC PROJECTS  
 SCREENPRINT ON VINYL  
 837 X 1195MM  
 \$2000 - \$3000

38. ET AL.  
 IBID. PUBLIC PROJECTS  
 SCREENPRINT ON VINYL  
 837 X 1195MM  
 \$2000 - \$3000

39. SARA HUGHES  
 LOVE LETTER  
 SCREENPRINT, 17/25  
 TITLE INSCRIBED, SIGNED AND  
 DATED 2006  
 750 X 565MM  
 \$1200 - \$2000

40. JIM SPEERS  
 SKULL  
 DIGITAL PRINT MOUNTED ON  
 DYBOND, 2008  
 TITLE INSCRIBED  
 840 X 590MM  
 \$600 - \$1000



41. MERILYN TWEEDIE  
HAPPY HOUR OR THOUSANDS  
OF PEOPLE NO. 4  
MIXED MEDIA  
TITLE INSCRIBED, SIGNED AND  
DATED 1989 ON ORIGINAL  
CLAYBROOK GALLERY LABEL  
AFFIXED VERSO  
535 X 215MM  
\$2000 - \$3000



42. SIMON INGRAM  
UNTITLED  
ACRYLIC ON ALUMINIUM  
TITLE INSCRIBED, SIGNED AND DATED  
VERSO  
500 X 400MM  
\$700 - \$1200

43. MATTHEW COUPER  
SORRY... STATE WRITE OFF!  
ENAMEL ON TIN  
TITLE INSCRIBED, SIGNED AND  
DATED 19<sup>TH</sup> OF APRIL 2007  
213 X 152MM  
\$400 - \$600



44. MICHAEL STEVENSON  
WISE MEN  
OIL ON BOARD  
TITLE INSCRIBED, SIGNED AND DATED 27  
FEBRUARY 1990; TITLE INSCRIBED, SIGNED AND  
DATED VERSO  
600 X 900MM  
\$8000 - \$12 000





45. MARTIN POPPELWELL  
STUDY FOR SHANGHAI CLIPPING III  
OIL ON LINEN, DIPTYCH  
TITLE INSCRIBED, SIGNED AND DATED 2006  
1680 X 2740MM OVERALL  
\$13 000 - \$20 000



46. ROHAN WEALLEANS  
BUDDER  
ENAMEL HOUSE PAINT AND PINS ON BOARD  
TITLE INSCRIBED, SIGNED AND DATED  
2002 VERSO  
1300 X 1030 X 140MM  
\$10 000 - \$16 000



47. FRANCIS UPRITCHARD

GESTURING BRONZE

CAST BRONZE, 2007

410 x 200 x 130MM

EXHIBITED: 'OF DEITIES OR MORTALS', CHRISTCHURCH ART GALLERY  
TE PUNA O WAIWHETU, NOVEMBER 16, 2007 - FEBRUARY 10, 2008.

\$18 000 - \$26 000

FRANCIS UPRITCHARD'S GESTURING BRONZE OF 2007 IS A SCULPTURE THAT OPERATES LIKE A PSYCHOLOGICAL DOPPELGÄNGER – A HALF-REMEMBERED APPARITION ALWAYS SEEMS TO BE LURKING ABOUT HER WORK.

MANY VIEWERS WILL HAVE HAD AT BEST THE PALE IMITATION OF A CLASSICAL EDUCATION. A SMATTERING OF ROMANCE LANGUAGES, THE FIRST TWENTY PAGES OF A DOG-EARED GREEK HISTORY TEXT AND A FEW SEMI-INTERESTED TRIPS TO THE MUSEUM HAVE RESULTED IN A BROKEN DOWN GLOBAL CONSCIOUSNESS OF DEGRADING HISTORICAL FRAGMENTS THAT BARELY REGISTERS ON THE PERSONAL RADAR.

MOST OF US COULD SPOT A PYRAMID AT TWENTY PAGES BUT A CANOPIC URN? THE EGYPTIAN DEITY ANUBIS? (THE ONE WITH THE JACKAL HEAD) HOW ABOUT RECALLING JUST ONE OF HERCULES LABOURS? CLUE: THERE WERE TWELVE OF THEM ACCORDING TO GOOGLE.

THIS CULTURAL AMNESIA MEANS THAT IN THE SPACE OF LESS THAN ONE HUNDRED YEARS POOR OLD ARCH DUKE FRANZ FERDINAND IS RECYCLED AS A SCOTTISH POP BAND WHO THEMSELVES ARE FEASTING ON THE CARRION OF POST-PUNK AUTEURS ORANGE JUICE AND JOSEF K.

IN THIS PSYCHIC SPACE WE FIND A FREE-ASSOCIATING UPRITCHARD AND HER ENIGMATIC GESTURING BRONZE. WE KNOW HE IS ACTING AS A METAPHOR BUT WHAT THE HELL FOR? HE'S DRESSED A BIT LIKE GANDHI, BUT WHY?

UPRITCHARD'S PRACTICE HAS BEEN DESCRIBED AS MUSEUMALOGICAL WHICH IS CACK-HANDED WAY OF SAYING HER WORK TOMB RAIDS BITS OF HISTORY, ETHNOGRAPHY, FORGOTTEN PHILOSOPHY, PAGAN ICONOGRAPHY ETC AND SERVES IT UP AS FETISH OBJECTS FOR THE CULTURALLY SEMI-LITERATE.

BUT THE FETISH OBJECT ONLY RESONATES IF THE METAPHOR IT IS A STUNT DOUBLE FOR STILL HAS A PULSE. THE FRISSEON EXPERIENCED BEFORE UPRITCHARD'S WORK IS A CLEAR INDICATION THAT EVEN AS SHE IS HOTWIRING OUR HEAVILY DEGRADED MEMORY BANKS THERE IS PLENTY OF JUICE IN THE BATTERY.

THAT SHE IS TAPPING INTO A GLOBAL CONSCIOUSNESS CAN BE SEEN IN THE WAY HER WORK TRAVELS. SINCE HER GROANING MUMMY FIRST CAUGHT THE ARTWORLD'S ATTENTION AT BRITAIN'S BECK'S FUTURES ART AWARD IN 2002 UPRITCHARD HAS EXHIBITED GLOBALLY AND WAS THE 2006 WALTERS PRIZE WINNER FOR HER EXHIBITION DOOMED, DOOMED ALL DOOMED. IN 2009 SHE REPRESENTS NEW ZEALAND AT THE VENICE BIENNALE.

THIS GESTURING BRONZE COMES FROM AN ONGOING BODY OF WORK WITHIN WHICH UPRITCHARD DEPICTS PHILOSOPHERS, PROPHETS, PRIESTLY AND HERMIT FIGURES THAT RESIDE IN MANY CULTURES. THESE INDIVIDUAL SEATED, STANDING AND GESTURING FIGURES ARE METAPHORS FOR THE ASCETIC LIFE AND THE SEARCH FOR TRUTH. WHO THE FIGURE ACTUALLY IS OR THE TRUTH HE POINTS TO IS NOW SHROUDED IN MYSTERY, HOWEVER THE INTENT OF HIS GESTURE STILL REGISTERS AS AUTHENTIC. WE HAVE SEEN IT A MILLION TIMES, MOST RECENTLY ON THE HISTORY CHANNEL.

IT'S A CLICHÉ BUT I THINK IT WAS THE EMPEROR AUGUSTUS, (OR WAS IT CHURCHILL?) WHO SAID, 'THOSE WHO FORGET HISTORY ARE DOOMED TO REPEAT IT'\*. AS THE GESTURING BRONZE SO ELOQUENTLY POINTS OUT... THE REMEMBERING IS TRICKY!

HAMISH CONEY

\*THIS 1905 SAYING IS ACTUALLY ATTRIBUTED TO THE SPANISH POET AND PHILOSOPHER GEORGE SANTAYANA WHO IS CREDITED WITH WHAT HAS BECOME TO BE KNOWN AS SANTAYANA'S APHORISM ON REPETITIVE.



48. ROHAN WEALLEANS  
 UNTITLED  
 ACRYLIC, POLYSTYRENE AND PAPER  
 580 x 870MM  
 EXHIBITED: 'TERROR FIRMER', IVAN ANTHONY  
 GALLERY, AUCKLAND, 2-26 MAY 2007.  
 \$2500 - \$3500

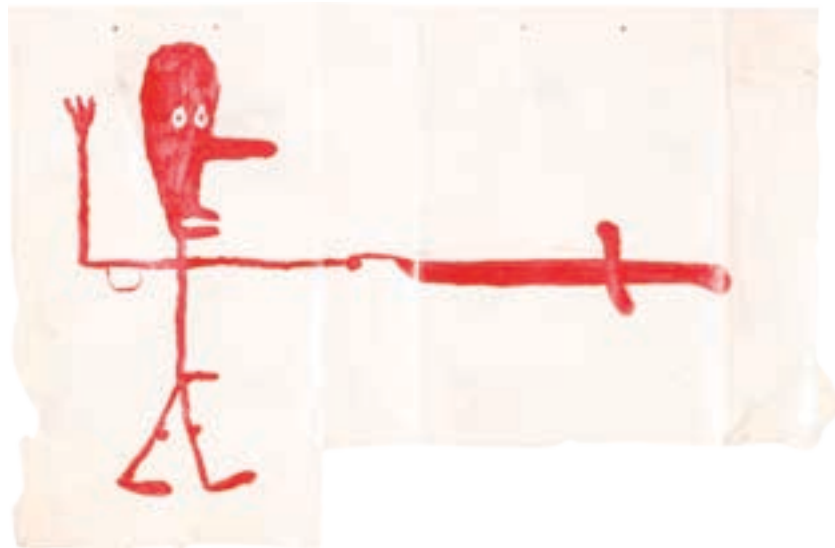
49. MICHAEL HARRISON  
 MAP  
 WATERCOLOUR, GRAPHITE AND ACRYLIC ON PAPER  
 TITLE INSCRIBED, SIGNED AND DATED NOVEMBER  
 1989 VERSO; HAMISH MCKAY GALLERY BLIND  
 STAMP APPLIED VERSO  
 227 x 193MM  
 \$1000 - \$2000



50. MICHAEL PAREKOWHAI  
 ELMER BUDD  
 TAXIDERMIED SPARROW AND POWDER  
 COATED ALUMINIUM  
 ORIGINAL MICHAEL LETT LABEL AFFIXED  
 225 x 170 x 80MM  
 \$5000 - \$7000

51. TONY DE LAUTOUR AND  
 PETER ROBINSON  
 MAN AND SWORD  
 OIL ON FOUND SHOPPING BAG  
 SIGNED AND DATED 1995  
 580 x 870MM  
 \$3000 - \$5000

52. JUDY MILLAR  
 UNTITLED  
 OIL AND ACRYLIC ON CANVAS  
 SIGNED AND DATED 2002 VERSO  
 1400 x 2100MM  
 \$13 000 - \$18 000







53. IAN SCOTT  
WHITE VISION  
ACRYLIC ON CANVAS  
TITLE INSCRIBED, SIGNED AND DATED 2004  
VERSO  
1650 X 1350MM  
\$18 000 - \$28 000



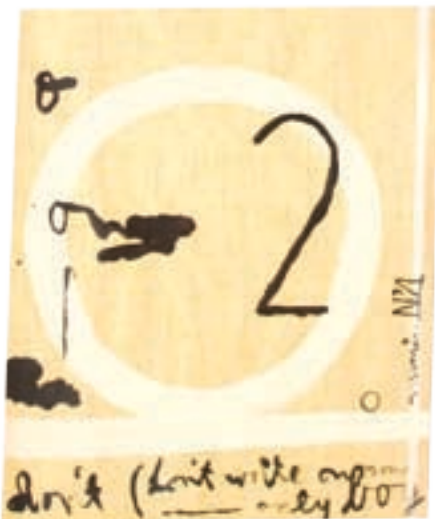
54. DON DRIVER  
DURABAND 5  
MIXED MEDIA  
TITLE INSCRIBED, SIGNED AND DATED 1987  
VERSO  
1400 X 2100MM  
\$8000 - \$14 000



55. MICHAEL PAREKOWHAI  
THE BOSOM OF ABRAHAM  
SCREENPRINTED VINYL ON FLUORESCENT LIGHT  
HOUSING  
1300 x 220 x 80MM  
\$5000 - \$7000



56. MICHAEL PAREKOWHAI  
THE BOSOM OF ABRAHAM  
SCREENPRINTED VINYL ON FLUORESCENT LIGHT  
HOUSING  
1300 x 220 x 80MM  
\$5000 - \$7000



57. MARTIN POPPELWELL

ONE 2

ACRYLIC ON PAPER

TITLE INSCRIBED AND SIGNED AND INSCRIBED DON'T  
(DON'T WRITE ON YOUR ARTY BOY)

350 X 283MM

\$1000 - \$2000

58. SIMON ESLING

UNTITLED

INK AND WATERCOLOUR ON PAPER

SIGNED AND DATED 2004 VERSO

200 X 200MM

\$500 - \$800



59. TONY DE LAUTOUR

LOOKING FOR BOOKS

OIL ON BOARD

TITLE INSCRIBED, SIGNED AND DATED 1999 VERSO

228 X 306MM

PROVENANCE: PURCHASED FROM HAMISH MCKAY  
GALLERY, WELLINGTON IN 1999

\$1000 - \$2000



60. SAMANTHA MITCHELL

BLACK BOX

INK AND COLLAGE ON PAPER

TITLE INSCRIBED

139 X 216MM

\$300 - \$600







Dash, 1986 / Cass Cassette

61. JULIAN DASHPER  
 CASS  
 GELATIN SILVER PRINT AND PASTEL ON  
 PAPER, DIPTYCH (1986)  
 ARTIST'S NAME, TITLE AND EDITION  
 NUMBER (3/10) PRINTED ON ARTIST'S  
 ORIGINAL LABEL  
 410 X 1160MM OVERALL  
 \$4500 - \$6500



62. JULIAN DASHPER  
 CRESTING WAVES  
 ACRYLIC ON LAMINATED BOARD  
 TITLE INSCRIBED, SIGNED AND DATED 1989  
 VERSO  
 593 X 795MM  
 \$3000 - \$5000



63. JOHN WALSH  
 PARE AND MAUI  
 OIL ON BOARD  
 TITLE INSCRIBED, SIGNED AND DATED 2007  
 VERSO  
 320 X 785MM  
 \$6000 - \$9000

65. PETER STICHBURY

JOE GRUVER

ACRYLIC ON LINEN

TITLE INSCRIBED, SIGNED AND DATED 2007 VERSO

EXHIBITED: 'THE ALUMNI', TE TUHI, 12 JULY - 21

SEPTEMBER 2008 (TOURING)

REFERENCE: DAVID EAGGLETON, 'LIVING DOLLS', THE

LISTENER, JANUARY 24 - 30 2009, P. 34.

600 x 500MM

\$15 000 - \$20 000



64. THOMAS ELLIOTT

SHINE

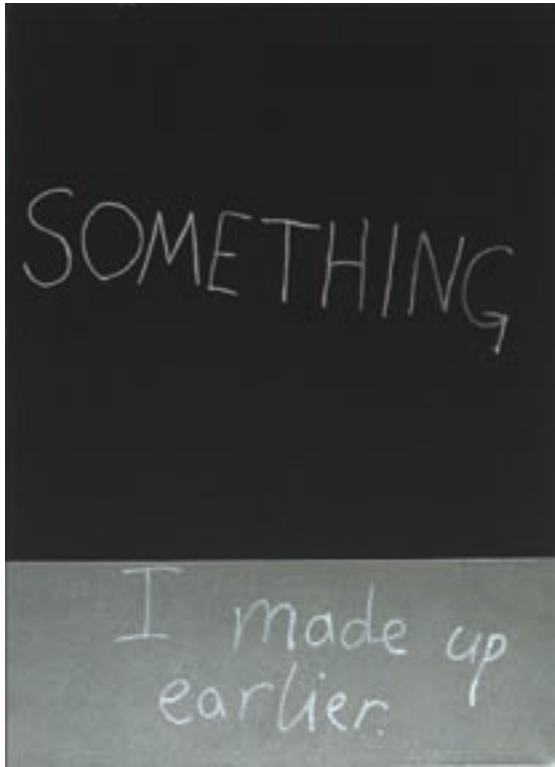
ACRYLIC ON HESSIAN ON CANVAS

SIGNED AND DATED '07 VERSO

1600 x 1800MM

\$6000 - \$9000





66. JOHN REYNOLDS  
SOMETHING MARK II

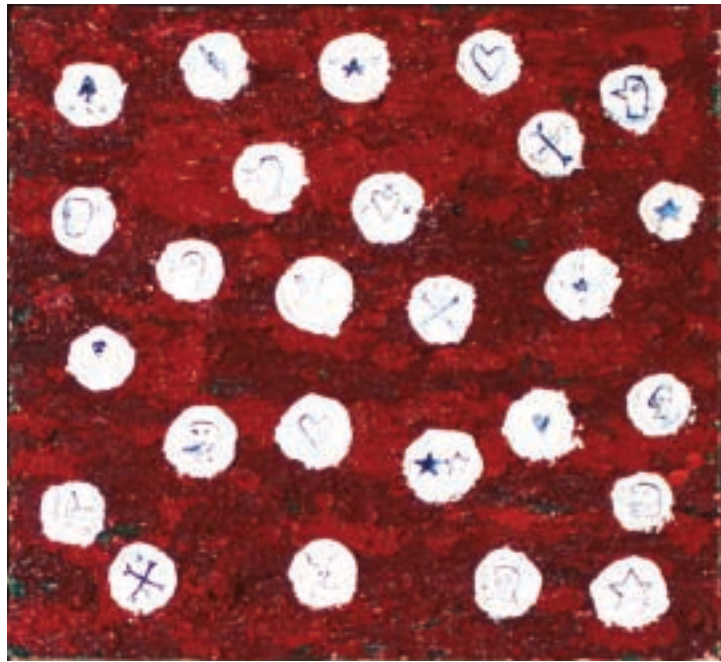
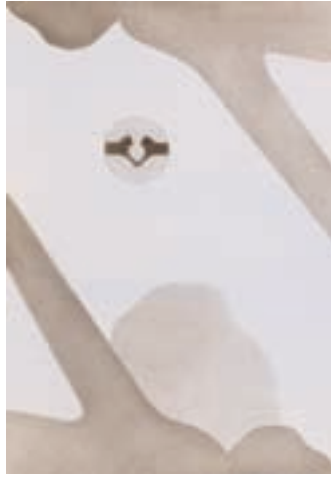
OIL PAINT MARKER AND ACRYLIC ON CANVAS  
TITLE INSCRIBED, SIGNED AND DATED 2004 VERSO  
830 X 630MM  
\$4500 - \$6500\*



67. LONNIE HUTCHINSON  
SEVEN SISTERS  
BLACK BUILDING PAPER  
SIGNED AND DATED '04  
1050 X 580MM INSTALLATION SIZE  
\$1800 - \$2800



68. BRETT GRAHAM  
UNTITLED - KARAKIA  
CARVED WOODEN RELIEF  
1065 X 563 X 90MM  
\$2000 - \$3000



69. MICHAEL HARRISON  
 BETWEEN THE ROCKS  
 WATERCOLOUR AND ACRYLIC ON  
 PAPER  
 SIGNED, TITLE INSCRIBED, DATED  
 25.9.03 - 16.10.03  
 295 x 205MM  
 \$2400 - \$3000

69A. MICHAEL HARRISON  
 RIVER OF SALT  
 WATERCOLOUR AND ACRYLIC ON  
 PAPER  
 SIGNED, TITLE INSCRIBED,  
 DATED 5.10.03 - 21.10.03  
 295 x 205MM  
 \$2400 - \$3000

70. MICHAEL HARRISON  
 ALTAR  
 ACRYLIC ON PAPER  
 SIGNED; TITLE INSCRIBED AND DATED  
 28-3-95, 7-7-95, 28-3-97  
 210 x 292MM  
 \$1200 - \$2000

71. TONY DE LAUTOUR  
 N. Z  
 OIL ON CANVAS  
 TITLE INSCRIBED  
 400 x 435MM  
 \$2500 - \$4000

# AN EXCEPTIONAL COLLECTION OF TWELVE NEW ZEALAND PHOTOGRAPHS FROM A DISTINGUISHED PRIVATE COLLECTOR

We are pleased to offer the following twelve lots from an important private collection. Although the vendor wishes to remain anonymous we felt that, despite this, as a collection it was more than worthy of being acknowledged as such. Collections come in all shapes and sizes yet rarely do they come as tightly-focused and as well conceived as this one. It serves as an excellent reminder that the best collections are often most memorable by virtue of what they exclude, as opposed to what they include.

Any serious collection of New Zealand Contemporary photographs should acknowledge Peter Peryer and the sustained contribution he has made to photography as art in this country. This collection includes four seminal Peryer's. From the very sought-after *Trout*, which the artist took at Lake Taupo in 1987 and from which he only ever printed around twelve gelatin silver prints of, through to the hauntingly beautiful *Whakarewarewa*, the richly-discursive *Waterfall* and onto the formal aggression of the later *Datura* (2002), the collection acts as a snapshot of an artist who uses the lens as a means to examine the intimate dialectic which exists between the ordinary and the extraordinary, the natural and the manufactured, the metaphysical and the mundane and the past and the present.

If the form of the book is the most common means through which modern society engages with the photographic image, then Laurence Aberhart again subverts our expectations of what a photograph can convey through the exquisite portfolio *Release*. Contained inside this superbly bound volume is a mini-retrospective of many of the artist's best images. Aberhart takes us on a virtual road trip from Balclutha to Waitaruke, stopping us in our tracks along the way with images as unforgettable as *Midway Beach*, *Gisborne 13 June 1986* and the all-time classic *Taranaki, (The Heavens Declare the Glory of God), New Plymouth, 14 May 1986*. Using a 100 year old view camera, Aberhart produces images which are steeped in the history not only of his country but also in the medium of photography.

The country's leading female contemporary photographers also make a small but essential appearance in this collection with a rare, vintage print of *Rauwha Tamaiopaea* by Marti Freidlander, two photographs from Anne Noble's Antarctica residency, an Ann Shelton photograph which was exhibited as part of the 'Slow Release' exhibition of New Zealand photography which was shown at Heide Museum of Modern Art in Melbourne in 2002, as well as two Yvonne Todd portraits.

Ben Plumbly



72. PETER PERYER

WHAKAREWAREWA

GELATIN SILVER PRINT

TITLE INSCRIBED AND DATED 1993 VERSO

340 x 515MM

ILLUSTRATED: GREGORY BURKE (ED), SECOND NATURE: PETER PERYER,  
PHOTOGRAPHER (EDITION STEMMLE, 1995), PL. 54.

\$6000 - \$9000



73. FIONA PARDINGTON

FEMALE KIWI, *APTERYX HAASTI*, KAITERANGI VALLEY, AV2848, CANTERBURY  
MUSEUM AND FEMALE HUIA, *HETEROLOCHA ACUITIROSTRIS*, MANGAROA HILL  
HUTT VALLEY 1885, COLLECTOR, LEN HARRIS: 1072.20 1950, AV2746,  
CANTERBURY MUSEUM

GOLD-TONED GELATIN SILVER PRINTS, DIPTYCH (2004)

508 x 610MM EACH

ILLUSTRATED: LARA STRONGMAN (ED), CONTEMPORARY NEW ZEALAND  
PHOTOGRAPHERS (WELLINGTON, 2006), P. 18 - 19.

\$9000 - \$14 000



74. YVONNE TODD

DRAIZE

LED PRINT, 3/3

TITLE INSCRIBED, SIGNED AND DATED 2003 VERSO  
210 X 170MM

EXHIBITED: 'THE BOOK OF MARTHA', PETER  
MCLEAVEY GALLERY, WELLINGTON, 2003

\$1000 - \$2000



75. YVONNE TODD

CLINIQUE CONSULTANT II

LIGHTJET PRINT, 2/3

TITLE INSCRIBED AND DATED 2002 VERSO  
900 X 703MM

\$6000 - \$8000





76. PETER PERYER

TROUT

GELATIN SILVER PRINT

TITLE INSCRIBED AND DATED 1987 VERSO

460 x 302MM

ILLUSTRATED: GREGORY BURKE (ED), *SECOND NATURE:*

PETER PERYER, PHOTOGRAPHER (EDITION STEMMLE, 1995),

PL. 67.

\$9000 - \$14 000



77. LAURENCE ABERHART

RELEASE

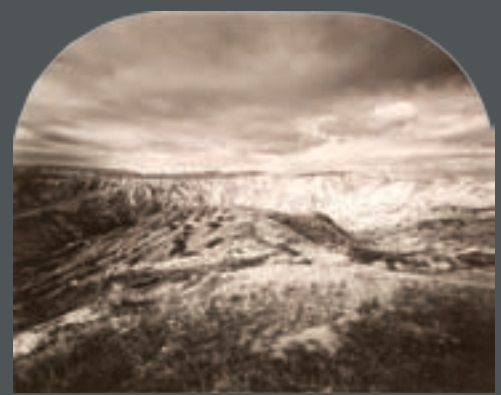
A LIMITED EDITION PORTFOLIO OF EIGHT 8" X 10" SELENIUM AND GOLD TONED CONTACT PRINTS, EDITION 10/ 14 (1989)

PUBLISHED BY THE ARTIST AND PYRAMID PRESS OF THE ANTIPODES

395 X 490 X 22MM: PUBLICATION SIZE

193 X 245MM: PRINT SIZE

\$27 000 - \$35 000





78. ANNE NOBLE

GOAL POST, ANTARCTICA

DIGITAL PIGMENT PRINT ON RAG PAPER (2002)

380 x 470MM

ILLUSTRATED: LARA STRONGMAN (ED), CONTEMPORARY NEW ZEALAND PHOTOGRAPHERS (WELLINGTON, 2006), P. 63.

\$3000 - \$5000

79. ANNE NOBLE

WILLIAM'S FIELD

PIGMENT PRINT ON ARCHIVAL PAPER, 2002

400 x 475MM

\$3000 - \$5000

80. ANN SHELTON

0900 # 1 FROM A GIRL IN EVERY PORT

TYPE C PHOTOGRAPH

ORIGINAL HEIDE GALLERY, SLOW RELEASE EXHIBITION LABEL AFFIXED VERSO

710 x 900MM

EXHIBITED: 'SLOW RELEASE: RECENT PHOTOGRAPHY IN NEW ZEALAND', HEIDE MUSEUM OF MODERN ART, MELBOURNE, AUSTRALIA, 10 AUGUST - 22 SEPTEMBER 2002 (TOURING).

\$2800 - \$4000



81. PETER PERYER

WATERFALL

GELATIN SILVER PRINT

TITLE INSCRIBED, SIGNED AND DATED 1982 VERSO

400 x 310MM

ILLUSTRATED: GREGORY BURKE (EDITOR), SECOND NATURE: PHOTOGRAPHER  
(EDITION STEMMLE, 1995), P. 41.

\$5000 - \$7000

82. PETER PERYER

DATURA

GELATIN SILVER PRINT, EDITION OF 15 (2002)

400 x 300MM

EXHIBITED: 'SLOW RELEASE: RECENT PHOTOGRAPHY IN NEW ZEALAND', HEIDE  
MUSEUM OF MODERN ART, MELBOURNE, AUSTRALIA, 10 AUGUST - 22 SEPTEMBER  
2002 (TOURING).

ILLUSTRATED: IN THE ABOVE EXHIBITION CATALOGUE, P. 10.

ILLUSTRATED: LARA STRONGMAN (ED), CONTEMPORARY NEW ZEALAND  
PHOTOGRAPHERS (WELLINGTON, 2006), P. 18 - 83.

\$4000 - \$6000

83. MARTI FREIDLANDER

RAUWHA TAMAIPIREA

VINTAGE GELATIN SILVER PRINT, CIRCA 1970

378 x 297MM

\$5000 - \$7000





84. RICHARD MALOY  
BLUE FLOWERS  
TYPE C PRINT, 1/3  
TITLE INSCRIBED, SIGNED AND DATED 2000 VERSO  
760 X 940MM  
\$1400 - \$2000

85. RICHARD MALOY  
SILVER ROCK  
TYPE C PRINT, 2/3  
TITLE INSCRIBED, SIGNED AND DATED 2001  
655 X 550MM  
\$900 - \$1600

86. JAE HOON LEE  
WINDOW  
TYPE C PRINT, EDITION OF 8  
990 X 740MM  
\$4000 - \$6000

87. MARTI FREIDLANDER  
MAKE THINGS HAPPEN  
VINTAGE GELATIN SILVER PRINT, 1969  
ORIGINAL EXHIBITION LABEL AFFIXED VERSO  
400 x 310MM  
\$3000 - \$5000

88. DI FFRENCH  
HUNTER/WARRIOR  
CIBACHROME PRINT, 1990  
ORIGINAL DI FFRENCH ARTIST'S ESTATE LABEL AFFIXED  
VERSO  
860 x 1043MM  
\$1500 - \$2500

89. CHRISTINE WEBSTER  
FELICITY 1  
GELATIN SILVER PRINT  
TITLE INSCRIBED, SIGNED AND DATED 1980 VERSO  
275 x 350MM  
\$600 - \$900

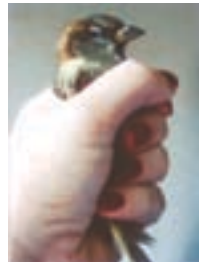


90. FIONA PARDINGTON  
PUHI WAHINE/ RERE TOROHA/ AE:  
I-V, 2004  
GELATIN SILVER PRINT  
320 x 200MM  
\$1800 - \$3000





91. MICHAEL PAREKOWHAI  
LARRY VICKERS  
TYPE C PRINT, EDITION OF 10  
ORIGINAL GOW LANGSFORD GALLERY  
LABEL AFFIXED VERSO  
544 X 440MM  
\$3000 - \$5000



92. FIONA PARDINGTON  
BIRD IN FIST  
DIGITAL PRINT, 11/15  
TITLE INSCRIBED, SIGNED AND DATED  
2001 VERSO  
67 X 50MM  
\$600 - \$900

93. MICHAEL PAREKOWHAI  
ELMER KEITH  
TYPE C PRINT, 4/10  
ORIGINAL GOW LANGSFORD GALLERY LABEL  
AFFIXED VERSO  
440 X 544MM  
\$3000 - \$5000





94. CHRISTINE WEBSTER  
THE BLUE ANGEL FROM CIRCUS  
OF ANGELS  
UNIQUE CIBACHROME PRINT, 1997  
1540 x 1045MM  
\$2500 - \$4000



95. LAYLA RUDNEVA-MACKAY  
I DON'T SEE YOU TODAY. I ONLY SEE THE BACKS OF THE  
BLACK CURTAIN HUNG CLOSELY OVER MY EYES. BEHIND  
THE BLACK MY BREATH IS WARM. I RUN AFTER THOUGHTS  
AND WORDS. PICTURES. BEHIND THE BLACK IDEAS MOVE  
FAST. I CAN'T CATCH THEM BEHIND THE BLACKS. I HAVE  
TO LET GO. I DON'T KNOW WHAT WORD WILL COME TO  
YOU FROM BEHIND THE BLACK. BUT I KNOW THEY WILL  
COME. I HAVE NO PLAN, NOTHING TO SPEAK OF. THEY  
JUST COME. I DON'T KNOW WHO THEY ARE. THEY COME  
SPEAKING. I DON'T KNOW WHAT THEY ARE SAYING. I TRY  
TO CATCH THE WAVE. I AM TRYING TO TIE DOWN THE  
TIDE FOR YOU. I KNOW NOT WHAT COMES NEXT, BUT  
IT'S COMING FOR YOU. FROM BEHIND THE BLACK WORDS  
BECOME, FOR YOU. IT IS NOT ME.  
TYPE C PRINT, EDITION OF 8  
1445 x 1150MM  
\$3000 - \$5000



96. BEN CAUCHI  
MY FATHER'S MOTHER  
GELATIN SILVER PRINT, 2001  
195 x 245MM  
\$1000 - \$2000

97. BEN CAUCHI  
AGED SIX MONTHS  
GELATIN SILVER PRINT, 2001  
195 x 245MM  
\$1000 - \$2000

98. PETER MADDEN  
MAN INTERLOPERCINE  
FOUND PHOTOGRAPHIC IMAGES  
TITLE INSCRIBED, SIGNED AND  
DATED '04 VERSO  
270 x 270MM  
\$1000 - \$1800

99. BEN CAUCHI  
STUDIO AID  
AMBROTYPE PRINT  
TITLE INSCRIBED, SIGNED AND  
DATED 2004 VERSO  
237 x 190MM  
PROVENANCE: PRIVATE  
COLLECTION, WELLINGTON  
\$2500 - \$4000

100. EVE ARNOLD  
MARILYN MONROE DANCING WITH  
ARTHUR MILLER, NEVADA ON LOCATION  
FOR THE MISFITS, 1960  
GELATIN SILVER PRINT  
TITLE INSCRIBED, SIGNED AND DATED VERSO  
260 x 385MM  
\$2000 - \$4000



101. LAURENCE ABERHART  
TARANAKI FROM OEO ROAD UNDER  
MOONLIGHT  
GELATIN SILVER PRINT  
TITLE INSCRIBED, SIGNED AND DATED  
1999  
170 x 243MM  
\$5000 - \$8000

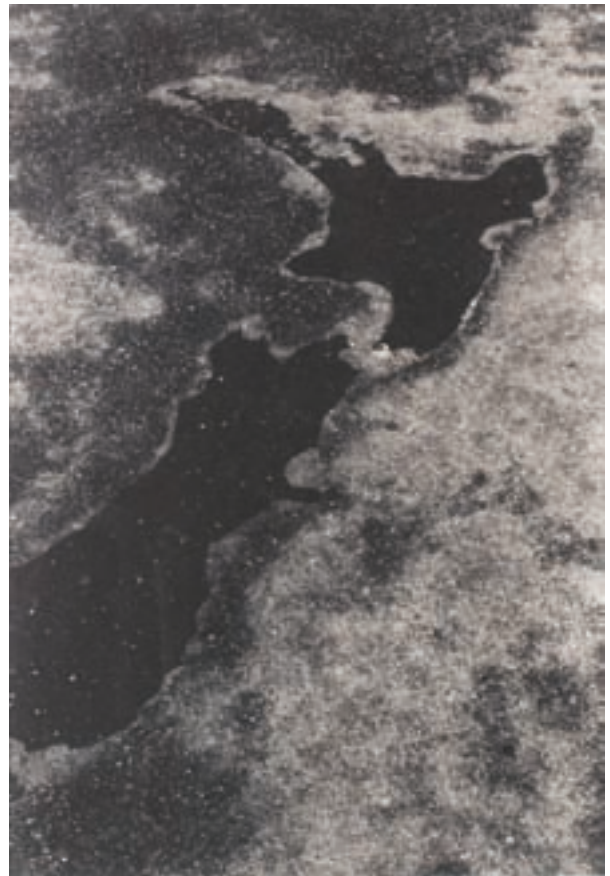
102. LAURENCE ABERHART  
LODGE CONCORD NO. 39, PAPANUI,  
CHRISTCHURCH, 1981  
GELATIN SILVER PRINT  
TITLE INSCRIBED, SIGNED AND DATED 1981 VERSO  
193 x 240MM  
EXHIBITED: 'NATURE MORTE: 105 PHOTOGRAPHS,  
1971 - 1989 BY LAURENCE ABERHART', NATIONAL  
ART GALLERY, WELLINGTON, 1990  
ILLUSTRATED: IN THE CATALOGUE FOR THE ABOVE  
EXHIBITION, P. 21.  
\$4000 - \$6000





103. BRIAN BRAKE  
PICASSO AT THE BULL FIGHT  
GELATIN SILVER PRINT, 1955  
505 x 402MM  
PROVENANCE: PRIVATE COLLECTION AUCKLAND  
\$4000 - \$7000

104. PETER PERYER  
NEW ZEALAND  
GELATIN SILVER PRINT  
TITLE INSCRIBED, SIGNED AND DATED 15. 3. 91 VERSO  
400 x 310MM  
ILLUSTRATED: GREGORY BURKE (EDITOR), SECOND NATURE:  
PHOTOGRAPHER (EDITION STEMMLER, 1995), P. 105.  
\$4000 - \$6000



OBJECTS

105. MARTIN POPPELWELL  
GOOD BAD UGLY  
BOTTLE WITH SLIP DECORATION  
H.410MM  
\$1000 - \$1200

106. MARTIN POPPELWELL  
STRIPPED JUG  
H.250MM  
\$200 - \$300

107. MARTIN POPPELWELL  
LE BOL AUX ONIONS ET LA PIPES  
D.325MM  
\$750 - \$1000

108. MARTIN POPPELWELL  
WHOSE AFRAID OF VIRGINIA  
WOOLF  
D.230MM  
\$300 - \$400

109. MARTIN POPPELWELL  
LIFE BEFORE THE THINGS  
CERAMIC SKULL  
W.190MM  
\$400 - \$700

110. BRONWYNNE CORNISH  
CANISTER WITH FIGURAL  
FINIAL  
H.340MM  
\$800 - \$1000

111. BRONWYNNE CORNISH  
GODDESS FIGURE  
H.300MM  
\$600 - \$700

112. BRONWYNNE CORNISH  
TWO HANDED AMPHORA  
H.240MM  
\$525 - \$625

113. BRONWYNNE CORNISH  
DAHLIA/SHOE/VASE  
- ALLUDE SERIES  
H.530MM  
\$2000 - \$2500



109



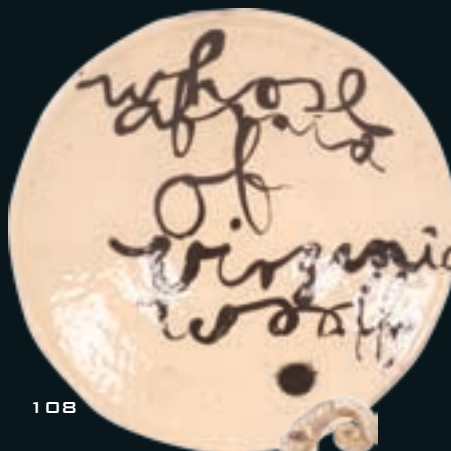
105



106



107



108



110



111



112



113

510417  
114. BRUCE AND ESTELLE MARTIN  
ANAGAMA FIRED 'ARROW POT'  
H.290MM  
\$700 - \$900

115. BRUCE AND ESTELLE MARTIN  
ANAGAMA FIRED BOTTLE VASE  
H.260MM  
\$400 - \$500

116. BRUCE AND ESTELLE MARTIN  
ANAGAMA FIRED OVOID VASE  
H.350MM  
\$300 - \$400

117. BRUCE AND ESTELLE MARTIN  
ANAGAMA FIRED MIZUSASHI (WATER POT)  
H.220MM  
\$400 - \$600

118. BRUCE AND ESTELLE MARTIN  
SQUAT CIRCULAR POT WITH PIERCED WALLS  
D.335MM  
\$300 - \$500

119. BRUCE AND ESTELLE MARTIN  
MALLET SHAPED BOTTLE VASE  
H.265MM  
\$100 - \$200

120. BRUCE AND ESTELLE MARTIN  
TAZZA WITH CONICAL FOOT  
H.165MM  
\$200 - \$300

121. BRUCE AND ESTELLE MARTIN  
CYLINDRICAL VESSEL  
D.190MM  
\$200 - \$400

122. BRUCE AND ESTELLE MARTIN  
SPHERICAL VASE  
H.235MM  
\$150 - \$250



114



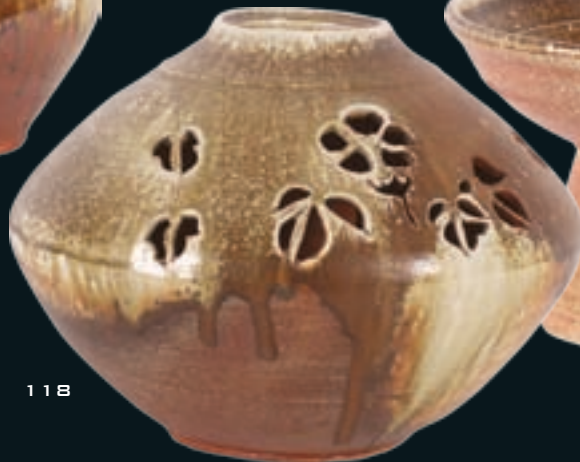
115



116



117



118



119



120



121



122

123. BARRY BRICKELL  
JAR WITH RESIST PATTERN  
H.200MM  
\$200 - \$300

124. LEN CASTLE  
DISH WITH GESTURAL DECORATION  
D.265MM  
\$250 - \$350

125. LEN CASTLE  
BOWL WITH BLUE INTERIOR GLAZE.  
D.380MM  
\$600 - \$800

126. BARRY BRICKELL  
CIRCULAR LIDDED CASSEROLE  
DISH  
D.270MM  
\$100 - \$200

127. BARRY BRICKELL  
FATSO JUG  
H.340MM  
\$1200 - \$1400

128. BARRY BRICKELL  
SPIROMORPH  
H.880MM  
\$3000 - \$3500



128



123



124



126



125



127



129. LEN CASTLE  
SLAB SIDED VASE  
H.360MM  
\$1000 - \$1500

130. LEN CASTLE  
OVOID POT  
H.375MM  
\$1800 - \$2200

131. LEN CASTLE  
SLAB SIDED BLOSSOM POT  
H.360MM  
\$1250 - \$1500

132. LEN CASTLE  
ROPE IMPRESSED PITCHER  
H.270MM  
\$600 - \$700

134. LEN CASTLE  
BALUSTER VASE  
H.210MM  
\$400 - \$500

135. LEN CASTLE  
POURING VESSEL  
H.240MM  
\$400 - \$500

133. LEN CASTLE  
'LAVA' GLAZE SPHERICAL POT  
H.180MM  
\$400 - \$500

136. LEN CASTLE  
OBLONG DISH WITH GESTURAL DESIGN  
W.320MM  
\$100 - \$200





137. LEN CASTLE  
SLAB SIDED BOTTLE VASE  
H.290MM  
\$1000 - \$1250

138. LEN CASTLE  
BLUE BOWL AF  
D.375MM  
\$200 - \$300

139. LEN CASTLE  
ASH GLAZED 'AVIAN' BOWL  
D.370MM  
\$1400 - \$1600

140. LEN CASTLE  
BLUE GLAZED 'AVIAN' BOWL  
W.240MM  
\$500 - \$700

141. LEN CASTLE  
BLUE GLAZED 'AVIAN' BOWL  
W.240MM  
\$500 - \$700

142. LEN CASTLE  
BOWL, IMPRESSED AND SGRAFITTO  
D.270MM  
\$500 - \$700

143. LEN CASTLE  
'CRATER LAKE' BOWL  
D.425MM  
\$1500 - \$2000

144. LEN CASTLE  
RED 'LAVA' BOWL  
D.340MM  
\$1500 - \$1750

145. LEN CASTLE  
CIRCULAR RAMEKIN  
D.120MM  
\$30 - \$50

137



138



139



140



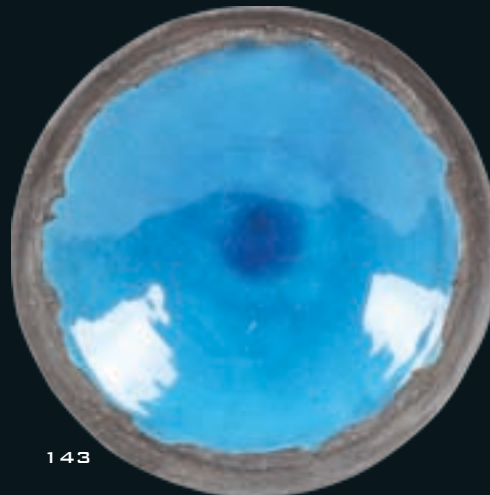
141



145



144



143



142



154

146. LEN CASTLE  
DISCOID VASE  
H.410MM  
\$1500 - \$1800

147. LEN CASTLE  
DISCOID VASE  
H.440MM  
\$1800 - \$2000

148. LEN CASTLE  
HANGING STONEWARE DISCOID BOTTLE  
H.290MM  
\$450 - \$700

149. LEN CASTLE  
HANGING STONEWARE FORM  
W.250MM  
\$500 - \$700

150. LEN CASTLE  
CONE FORM SEDGE VASE  
H.250MM  
\$350 - \$450

151. LEN CASTLE  
CARAFE WITH FIGURAL BOSS  
H.240MM  
\$250 - \$350

152. LEN CASTLE  
THREE SMALL DISHES  
LARGEST D.190MM  
\$150 - \$300

153. LEN CASTLE  
FOUR SPHERICAL GRASS VASES  
LARGEST H.120MM  
\$300 - \$400

154. LEN CASTLE  
THREE ASH GLAZED DISHES  
LARGEST D.220MM  
\$400 - \$500



148



149



150



151



146



153



152



147



161



162



163



164

155. MIREK SMISEK  
SALT GLAZED JUG  
H.220MM  
\$150 - \$250

159. MIREK SMISEK  
TWO FLASKS WITH RESIST DECORATION  
H.200MM  
\$150 - \$250

163. RUTH CASTLE  
HANGING ONION BASKET  
H.600MM  
\$125 - \$200

156. MIREK SMISEK  
BOWL ON PEDESTAL FOOT  
D.240MM  
\$350 - \$450

160. MIREK SMISEK  
SALT AND PEPPER SHAKERS  
H.145MM  
\$50 - \$75

164. RUTH CASTLE  
HANGING GARLIC BASKET  
H.400MM  
\$100 - \$175

157. MIREK SMISEK  
FLAGON AND 6 YUNOMI  
H.290MM  
\$150 - \$250

161. RUTH CASTLE  
STAR OF DAVID RATTAN CANE DISH  
D.385MM  
\$125 - \$200

158. MIREK SMISEK  
FLASK  
H.205MM  
\$60 - \$100

162. RUTH CASTLE  
PALM AND RATTAN CIRCULAR PLATTER  
D.340MM  
\$150 - \$25



155



157



159



156



158



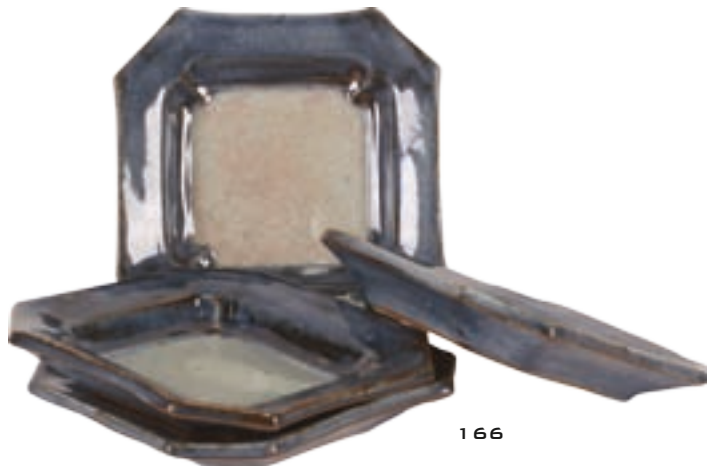
160



165. JANET LEACH  
SLAB FORMED CYLINDRICAL  
(TREE STUMP) VASE  
H.240MM  
\$1500 - \$2000

165

166. TAKEICHI KAWAI  
FOUR PRESSED SLAB DISHES  
150MM SQ  
\$600 - \$800



166

167. TAKASHI HINODA  
MY FAIR LADY  
EXHIB FLETCHER CHALLENGE CERAMICS AWARD  
1992 (NO 61)  
610 X 480 X 370MM  
\$1200 - \$1500



167



168

168. ERNEST SHUFFLEBOTHAM  
CORONATION COMMEMORATIVE LOVING CUP  
FOR CROWN LYNN  
UNIQUELY INSCRIBED AND NUMBERED (NO. 1)  
W. 190MM  
\$2000 - \$2500

169. NZ SHIPPING CO  
PASSENGER LIST INCLUDING  
SHUFFLEBOTHAM FAMILY  
\$200 - \$300



169

170. DAVID JENKIN FOR CROWN LYNN  
HIGH WAISTED VASE WITH HORSES  
H. 235MM  
\$600 - \$800

171. DANIEL STEENSTRA FOR CROWN LYNN  
OVOID VASE WITH BAMBOO  
H. 235MM  
\$400 - \$600

172. DANIEL STEENSTRA  
SHOULDER VASE CRACKED ICE PATTERN  
H. 160MM  
\$300 - \$500

173. DANIEL STEENSTRA FOR CROWN LYNN  
BALUSTER VASE WITH BANDED PATTERN  
H. 245MM  
\$300 - \$400

174. DANIEL STEENSTRA FOR CROWN LYNN  
TALL 'TULIP' VASE WITH LANCEOLATE  
PATTERN  
H. 275MM  
\$350 - \$550

175. WHARETANA WARE (CROWN LYNN)  
TIKI BOOKENDS  
H. 145MM  
\$2600 - \$3200



174



172



173



171



170



175

176. LEN CASTLE  
SEA SECRET/FOSSIL  
L.200MM  
\$300 - \$400

177. LEN CASTLE  
SEA SECRET/FOSSIL  
L.150MM  
\$300 - \$400

178. GAVIN CHILCOTT  
LOZENGE SHAPED VASE  
H.300MM  
\$200 - \$300

179. JANE ZUSTERS  
BOX WITH APPLIED ELEMENTS  
H.195MM  
\$600 - \$900

180. JANE ZUSTERS  
BOX WITH SGRAFFITO PANELS  
H.190MM  
\$600 - \$900

181. JANE ZUSTERS  
BOX WITH SGRAFFITO DECOI  
H.130MM  
\$150 - \$250

182. JANE ZUSTERS  
BOX WITH SGRAFFITO LID  
H.100MM  
\$150 - \$250

183. DENIS O'CONNOR  
BOTTLE FORM  
H.210MM  
\$400 - \$600



176



177



178



182



179



180



181

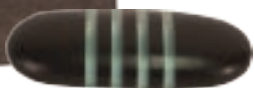


183



185

184



186

184. GUY NGAN  
BRONZE SCULPTURE  
H.415MM  
\$1500 - \$2500

185. MARTE SZIRMAJ  
MAORI BASKET OF KNOWLEDGE  
CAST PEWTER  
H.180MM  
\$150 - \$250

186. JOHN EDGAR  
LIGHTSTONE  
L.120MM  
\$300 - \$400

187. SOFIA TEKELA-SMITH  
SOFIA [FIBREGLASS AND ACRYLIC]  
400 X 355MM  
UNTITLED [DOUBLE DISC MOTHER OF PEARL  
AND WAXED THREAD LEI]  
\$1800 - \$2200

188. KINGSLEY BAIRD  
INVESTIGATION IN SCALE: RELIQUARY  
BRONZE 2008 ED 1/6  
140 X 340 X 300MM  
\$4800 - \$5200

189. BRIAN FLINTOFF  
AND NGA  
WHALEBONE  
W.120MM  
\$1000 - \$1200

190. WARWICK FREEMAN  
OBSIDIAN AND GOLD DISC PENDENT  
D.48MM  
\$1200 - \$1400

191. WARWICK FREEMAN  
SILVER TABUA NECKLACE  
W.223MM  
\$1000 - \$1200



187



190

191



188



189



192. ANDY WARHOL  
CAMPBELL'S SOUP  
L/E PORCELAIN PLATE  
D.270MM  
\$300 - \$400



193. ANDY WARHOL  
SOUP CAN AND DOLLARS  
L/E PORCELAIN PLATE  
D.270MM  
\$300 - \$400



194. PAUL HARTIGAN  
CHRIST AND MADONNA  
TWO PORCELAIN PLATES  
D.240MM  
\$300 - \$400



196. GREGOR KREGAR  
PIGGY BANK  
[THE PYGG BANK PROJECT, 2005]  
L.270MM  
\$200 - \$300



195



196

195. RICHARD KILLEEN  
FISH AND STICKS, 1978  
[TEMUKA POTTEIES]  
420 X 285MM  
\$600 - \$700



197

197. GREGOR KREGAR  
PIGGY BANK  
L.295MM  
\$200 - \$300



197

198. ANN ROBINSON  
TAPERING SQUARE SECTION VASE  
H.400MM  
\$4000 - \$5000

199. GARY NASH  
GREEN MOON FLASK VASE  
H.250MM  
\$150 - \$250

200. GARY NASH  
BLUE FLASK VASE  
H.300MM  
\$150 - \$250

201. GARY NASH  
SQUAT CIRCULAR VASE  
2001  
D.220MM  
\$200 - \$350

202. ARTIST UNKNOWN  
SIGNED INSCRIBED NZ '81  
VASE  
H.160MM  
\$40 - \$60

203. GARY NASH  
CYLINDRICAL VASE  
H.380MM  
\$300 - \$400

204. GARY NASH  
PLATTER WITH CUTTING  
D.390MM  
\$100 - \$200

205. ARTIST UNKNOWN  
CIRCULAR BOWL  
D.300MM  
\$200 - \$300



198



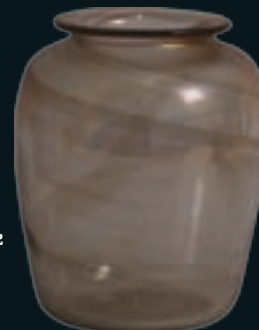
199



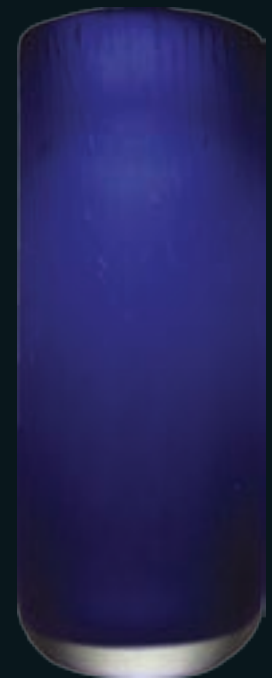
201



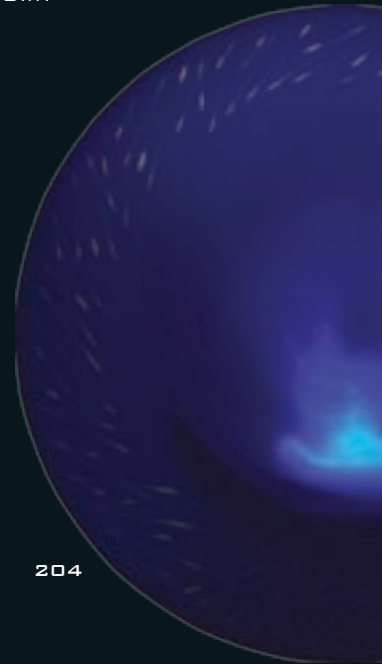
200



202



203



204



206. BERTIL VALLIEN FOR KOSTA BODA  
SQUAT OVAL BOTTLE  
\$75 - \$100

207. KJELL ENGMAN FOR KOSTA BODA  
FOOTED BOWL  
D.220MM  
\$100 - \$200

208. KJELL ENGMAN FOR KOSTA BODA  
PITCHER  
H.325MM  
\$100 - \$200

209. KJELL ENGMAN FOR KOSTA BODA  
STEMMED GASS  
H.250MM  
\$50 - \$100

210. BERTIL VALLIEN FOR KOSTA BODA  
SLENDER NECKED BOTTLE  
H.325MM  
\$75 - 125

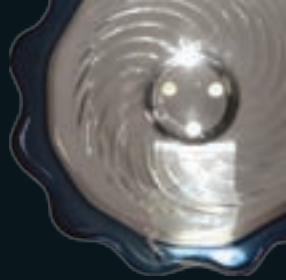
211. KOSTA BODA  
FRUIT  
W.195MM  
\$50 - \$100



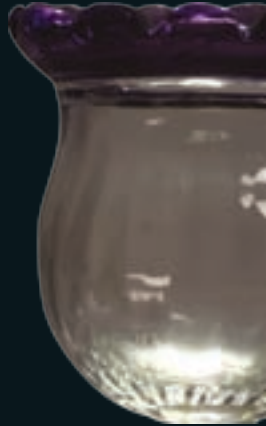
208



209



212



213

212. ANN WAHLSTROM  
FOR KOSTA BODA  
SCALLOP RIMMED DISH  
D.220MM  
\$40 - \$60

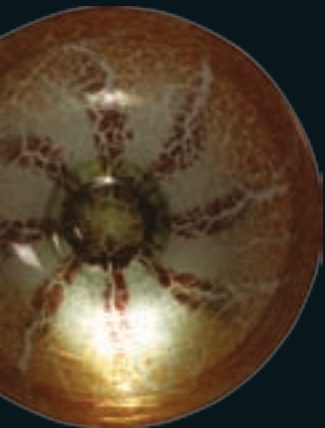
213. ANN WAHLSTROM  
FOR KOSTA BODA  
SCALLOP RIMMED BOWL  
H.200MM  
\$50 - \$100



210



205



206

207



211



214. ANN ROBINSON  
BLOWN VASE WITH COLOURED CANES, 1986  
H.330MM  
\$2800 - \$3200

215. PETER COLLIS  
SPIRE NECKED BOTTLE VASE  
\$80 - \$120

216. PETER COLLIS  
SPIRE NECKED BOTTLE VASE  
\$100 - \$150

217. PETER COLLIS  
SPIRE NECKED BOTTLE VASE  
\$100 - \$150

218. PETER COLLIS  
SPIRE NECKED BOTTLE VASE  
\$100 - \$150

219. DORIS DUTCH  
TOWNSCAPE PLAQUE  
W.260MM  
\$150 - \$200

220. DORIS DUTCH  
TOWNSCAPE PLAQUE  
W.390MM  
\$150 - \$200

221. JOHN PARKER  
STONEWARE MATT BLACK VASE  
H.245MM  
\$300 - \$400

222. JOHN PARKER  
STONEWARE MATT BLACK BOWL  
D.205MM  
\$350 - \$500

223. JOHN CRICHTON  
MOSAIC CHARGER  
D.700MM  
\$3000 - \$4000

224. JOHN CRICHTON  
MOSAIC CHARGER  
D.570MM  
\$1700 - \$2200

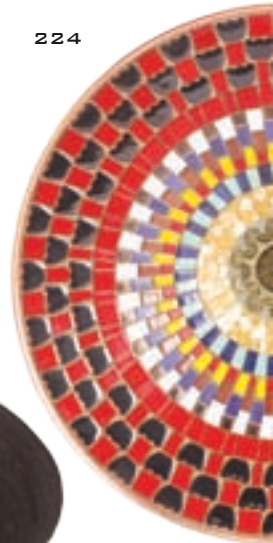
225. GEOFF FAIRBURN  
DECORATED GOURD  
H.220MM  
\$90 - \$120

226. GEOFF FAIRBURN  
LARGE DECORATIVE GOURD  
H.620MM  
\$150 - \$225



223

224



221



219



220



222



225



226



227

227. MELIS VAN DER SLUIS  
LARGE OBLONG PLATTER  
W.560MM  
\$700 - \$800

228. MELIS VAN DER SLUIS  
MALLETT SHAPED BOTTLE  
H.185MM  
\$400 - \$500

229. MELIS VAN DER SLUIS  
HEMISPHERICAL, FOOTED BOWL  
D.195MM  
\$300 - \$400

230. MELIS VAN DER SLUIS  
SLAB SIDED VASE  
H.290MM  
\$500 - \$600

231. ROSS MITCHELL ANYON  
CERAMIC BOWL AND RAKU TABLET  
D.150MM  
\$150 - \$200

232. JAMES GREIG  
TRANSFORMATION SERIES VASE  
H.160MM  
\$1500 - \$1800

233. JAMES GREIG  
TRANSFORMATION SERIES VASE  
H.300MM  
\$1000 - \$1500

234. JAMES GREIG  
LEAF SHAPED BOWL  
W.400MM  
\$1000 - \$1500

235. JOAN CAMPBELL (AUST)  
RAKU OVOID FORM  
H.260MM  
\$180 - \$220

236. MARGARET RADFORD  
TRIPLE NECKED TUBULAR VASE  
H.190MM  
\$150 - \$200



229



228



230



231



236



233



232



234





237

238



239



240

237. PETER STICHBURY  
OVOID VASE  
H.290MM  
\$400 - \$500

238. PETER STICHBURY  
BALUSTER VASE  
H.165MM  
\$50 - \$100

239. HARRY AND MAY DAVIS  
TEAPOT AND COVERED BUTTER DISH  
POT H.205MM  
\$200 - \$300

240. WARREN TIPPETT  
JUG  
H.150MM  
\$80 - \$110

241. PETER STICHBURY  
FLASK  
H.170MM  
\$40 - \$60



241



242



243

242. PETER STICHBURY  
FLASK  
H.245MM  
\$50 - \$70

243. PETER STICHBURY  
TWO BALUSTER VASES  
TALLEST H.180MM  
\$150 - \$200

244. WARREN TIPPETT  
TEAPOT  
\$150 - \$200

245. PETER STICHBURY  
PLATE WITH LEAF PATTERN  
D.150MM  
\$80 - \$140

246. PETER STICHBURY  
SMALL PLATE  
D.75MM  
\$40 - \$60

247. HELEN MASON  
SHALLOW BOWL  
D.290MM  
\$50 - \$100

245

246

244

247



248. WARREN TIPPETT  
COFFEE AND TEA POTS, MILK AND SUGAR  
TALLEST H.205  
\$200 - \$300

249. PETER STICHBURY  
TWO OVOID VASES  
TALLEST H.150MM  
\$150 - \$200

250. WARREN TIPPETT  
TANKARD  
H.140MM  
\$100 - \$140

251. PETER STICHBURY  
COFFEE POT  
H.230MM  
\$60 - \$100

252. HARRY AND MAY DAVIS  
WINE EWER WITH RESIST DECORATION  
H.420MM  
\$500 - \$600

253. FREDERIKA ERNSTEN  
OVOID LAMP BASE  
H.290MM  
\$50 - \$90



248



249



251



252

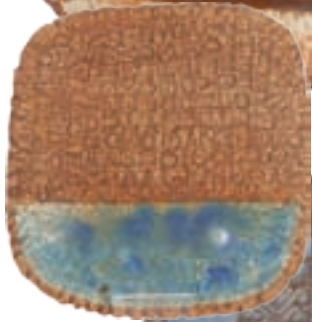


250

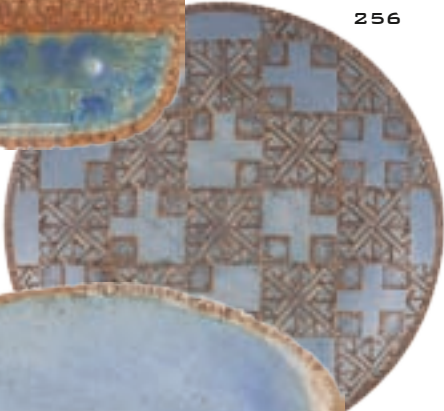
253



254



255



256



257



258



264

254. DORIS DUTCH  
OVAL PLATTER  
W.330MM  
\$50 - \$100

255. DORIS DUTCH  
SQUARE PLATE  
200 x 190MM  
\$125 - \$150

256. STEVE SCHOLFIELD  
ROCKET POTTERY STONEWARE DISH  
D.340MM  
\$200 - \$250

257. DORIS DUTCH  
OVAL PLATE  
W.325MM  
\$50 - \$90

258. STEVE SCHOLFIELD  
ROCKET POTTERY STONEWARE DISH  
D.335MM  
\$200 - \$250

259. HARRY AND MAY DAVIS  
LARGE BOWL  
D.370MM  
\$275 - \$325

260. ARTIS UNKNOWN MARKED MU  
BALUSTER VASE WITH COMBED DESIGN  
H260MM  
\$200 - \$250

262. ARTIST UNKNOWN  
VASE WITH GESTURAL DESIGN  
H.330MM  
\$50 - \$75

263. GRAEME STORM  
BALUSTER BOTTLE WITH LUG HANDLE  
\$200 - \$250

264. ARTIST UNKNOWN  
CHINO SQUAT CIRCULAR VASE  
D.170MM  
\$50 - \$100

265. TED KINDLEYSIDES  
ANTHROPOMOPHIC JUG  
H.130MM  
\$60 - \$100



259



260



262



263



266. TED KINDLEYSIDES  
ZOOMORPHIC JUG  
H. 110MM  
\$50 - \$75



267. TED KINDLEYSIDES  
ZOOMORPHIC JUG  
H. 120MM  
\$50 - \$75



268. MERILYN WISEMAN  
LARGE PLATTER  
L. 500MM  
\$230 - \$280

265

269. KEITH BLIGHT  
TALL CYLINDRICAL VASE  
H. 490MM  
\$120 - \$180



270. CHRISTINE BOSWICK  
PORCELAIN VESSEL AF  
H. 320MM  
\$30 - \$50

266

271. MIREK SMISEK  
SHALLOW BOWL  
D 300MM  
\$200 - \$300

267

272. KEITH BLIGHT  
FOSSIL PATTERNED SLAB VASE  
H. 320MM  
\$250 - \$300



268

273. JAN VAN DER PUTTEN  
LARGE FLAGON  
H. 420MM  
\$300 - \$400



274. WARREN TIPPETT  
FOUR MOUTHED VASE  
H. 180MM  
\$300 - \$400



274

275. DON THORNLEY (ATTRIB)  
VESSEL  
\$50 - \$100

270



275

269



276

276. ELIZABETH LISSAMAN  
POT WITH FOLIATE DESIGN  
H. 140MM  
\$350 - \$500



277. DON THORNLEY  
CHINO SLAB BUILT VASE  
H. 610MM  
\$150 - \$300



272

277

273



271



278



279



280



281

278. TED DUTCH  
SIGNALLER FIGURE  
H.115MM  
\$600 - \$700

279. TED DUTCH  
SIGNALLER FIGURE  
H.142MM  
\$400 - \$500

280. RICK RUDD  
RAKU GORILLA  
H.220MM  
\$1000 - \$1250

281. JOHN CRAWFORD  
BOTTLE VASE  
H. 270MM  
\$200 - \$300



182



283



285

282. PETER STICHBURY  
TEA POT  
H.300MM  
\$400 - \$600

283. ANNEKE BORREN  
SQUAT SPHERES  
D.165MM  
\$400 - \$600

284. CHARLES HOLMES  
SEA FORM  
D.360MM  
\$500 - \$800

285. THEO JANSSEN  
FIGURE  
H.800MM  
\$500 - \$800

286. ARTIST UNKNOWN  
TILE AND BRONZE SCULPTURE  
335 x 525MM  
\$300 - \$400



284



286



287



288



289

287. JAN VAN DER PUTTEN  
TWO FLAGONS  
TALLEST H.190MM  
\$50 - \$100

288. DOREEN BLUMHARDT  
PLATE ALONG WITH ANOTHER  
D.250  
\$50 - \$100

289. WARREN TIPPET  
PLATE D.295MM ALONG WITH ANOTHER.  
\$50 - \$100



290

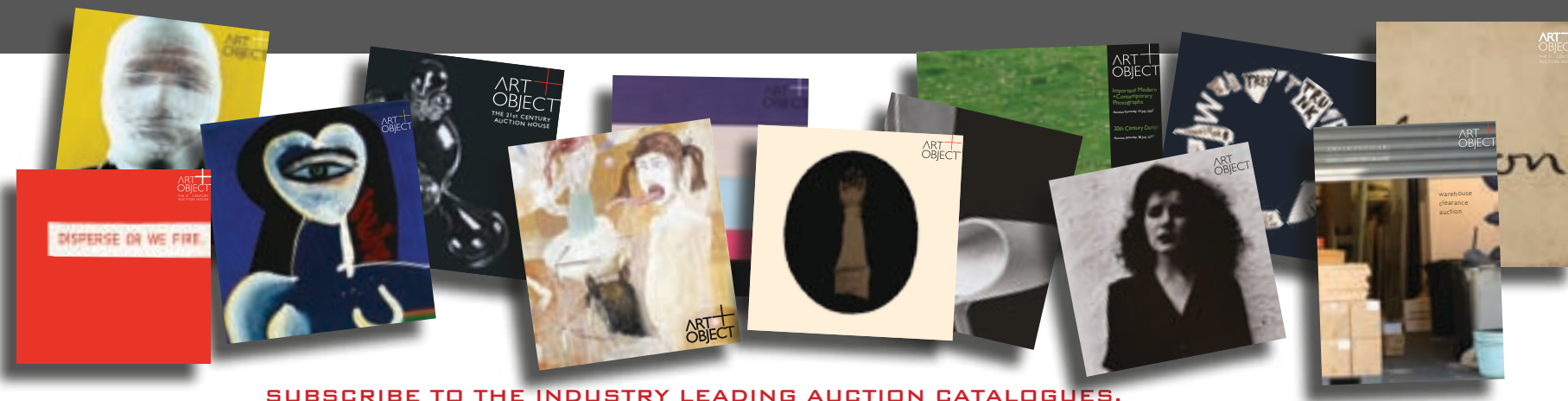


291

290. POTTER UNKNOWN  
THREE OBLONG BOWLS  
\$60 - \$100

291. HILLSIDE POTTERY  
THREE GRADUATED BOWLS  
\$50 - \$90

# SUBSCRIBE / GIFT



**SUBSCRIBE TO THE INDUSTRY LEADING AUCTION CATALOGUES.  
OR GIVE A SUBSCRIPTION AS A GIFT TO ART LOVING FRIENDS**

**OVER TIME THESE BECOME AN IMPORTANT ARCHIVE OF EVENTS, ART AND OBJECTS.**

**A SUBSCRIPTION GUARANTEES A MINIMUM OF SIX CATALOGUES PER ANNUM OFTEN UP  
TO TEN ALONG WITH ANY ADDITIONAL MATERIAL ART + OBJECT PUBLISHES  
DELIVERED FREE TO YOUR PREFERRED ADDRESS.**

**NEW ZEALAND \$100.00**

**SUBSCRIPTION RATES INCLUDE GST + POSTAGE:**

**AUSTRALIA \$160.00**

**REST OF THE WORLD (AIRMAIL FASTPOST) \$275.00**

**MR/MRS/MS: \_\_\_\_\_ SURNAME: \_\_\_\_\_**

**POSTAL ADDRESS: \_\_\_\_\_**

**STREET ADDRESS: \_\_\_\_\_**

**BUSINESS PHONE: \_\_\_\_\_ MOBILE: \_\_\_\_\_ FAX: \_\_\_\_\_**

**EMAIL ADDRESS: \_\_\_\_\_**

**PLEASE FIND MY CHEQUE ENCLOSED  OR CHARGE MY VISA  MASTERCARD**

**CARD NUMBER: \_\_\_\_\_ EXPIRY DATE: \_\_\_\_\_**

**POST WITH CHEQUE TO ART+OBJECT, PO BOX 68 - 345 NEWTON, AUCKLAND 1145, NEW ZEALAND.  
FAX WITH CREDIT CARD DETAILS TO +64 9 354 4645. DOWNLOAD THIS FORM FROM WWW.ARTANDOBJECT.CO.NZ**

**ART+OBJECT 3 ABBEY STREET, NEWTON, AUCKLAND, NEW ZEALAND. TELEPHONE +64 9 354 4646, FREEPHONE  
0800 80 60 01**

# CONDITIONS OF SALE

NOTE IT IS ASSUMED THAT ALL BIDDERS AT AUCTION HAVE READ AND AGREED TO THE CONDITIONS DESCRIBED ON THIS PAGE. ART+OBJECT DIRECTORS ARE AVAILABLE DURING THE AUCTION VIEWING TO CLARIFY ANY QUESTIONS YOU MAY HAVE.

**1 REGISTRATION:** ONLY REGISTERED BIDDERS MAY BID AT AUCTION. YOU ARE REQUIRED TO COMPLETE A BIDDING CARD OR ABSENTEE BIDDING FORM PRIOR TO THE AUCTION GIVING YOUR CORRECT NAME, ADDRESS AND TELEPHONE CONTACT + SUPPLEMENTARY INFORMATION SUCH AS EMAIL ADDRESSES THAT YOU MAY WISH TO SUPPLY TO ART+OBJECT

**2 BIDDING:** THE HIGHEST BIDDER WILL BE THE PURCHASER SUBJECT TO THE AUCTIONEER ACCEPTING THE WINNING BID AND ANY VENDOR'S RESERVE HAVING BEEN REACHED. THE AUCTIONEER HAS THE RIGHT TO REFUSE ANY BID. IF THIS TAKES PLACE OR IN THE EVENT OF A DISPUTE THE AUCTIONEER MAY CALL FOR BIDS AT THE PREVIOUS LOWEST BID AND PROCEED FROM THIS POINT. BIDS ADVANCE AT SUMS DECREED BY THE AUCTIONEER UNLESS SIGNALLED OTHERWISE BY THE AUCTIONEER. NO BIDS MAY BE RETRACTED. THE AUCTIONEER RETAINS THE RIGHT TO BID ON BEHALF OF THE VENDOR UP TO THE RESERVE FIGURE.

**3 RESERVE:** LOTS ARE OFFERED AND SOLD SUBJECT TO THE VENDOR'S RESERVE PRICE BEING MET.

**4 LOTS OFFERED AND SOLD AS DESCRIBED AND VIEWED:** ART+OBJECT MAKES ALL ATTEMPTS TO ACCURATELY DESCRIBE AND CATALOGUE LOTS OFFERED FOR SALE. NOTWITHSTANDING THIS NEITHER THE VENDOR NOR ART+OBJECT ACCEPTS ANY LIABILITY FOR ERRORS OF DESCRIPTION OR FAULTS AND IMPERFECTIONS WHETHER DESCRIBED IN WRITING OR VERBALLY. THIS APPLIES TO QUESTIONS OF AUTHENTICITY AND QUALITY OF THE ITEM. BUYERS ARE DEEMED TO HAVE INSPECTED THE ITEM THOROUGHLY AND PROCEED ON THEIR OWN JUDGMENT. THE ACT OF BIDDING IS AGREED BY THE BUYER TO BE AN INDICATION THAT THEY ARE SATISFIED ON ALL COUNTS REGARDING CONDITION AND AUTHENTICITY.

**5 BUYERS PREMIUM:** THE PURCHASER BY BIDDING ACKNOWLEDGES THEIR ACCEPTANCE OF A BUYERS PREMIUM OF 12.5% + GST ON THE PREMIUM TO BE ADDED TO THE HAMMER PRICE IN THE EVENT OF A SUCCESSFUL SALE AT AUCTION.

**6 ART+OBJECT IS AN AGENT FOR A VENDOR:** A+O HAS THE RIGHT TO CONDUCT THE SALE OF AN ITEM ON BEHALF OF A VENDOR. THIS MAY INCLUDE WITHDRAWING AN ITEM FROM SALE FOR ANY REASON.

**7 PAYMENT:** SUCCESSFUL BIDDERS ARE REQUIRED TO MAKE FULL PAYMENT IMMEDIATELY POST SALE - BEING EITHER THE DAY OF THE SALE OR THE FOLLOWING DAY. IF FOR ANY REASON PAYMENT IS DELAYED THEN A 20% DEPOSIT IS REQUIRED IMMEDIATELY AND THE BALANCE TO 100% REQUIRED WITHIN 3 WORKING DAYS OF THE SALE DATE. PAYMENT CAN BE MADE BY EFTPOS, BANK CHEQUE OR CASH. CHEQUES MUST BE CLEARED BEFORE ITEMS ARE AVAILABLE FOR COLLECTION. CREDIT CARDS ARE NOT ACCEPTED.

**8 FAILURE TO MAKE PAYMENT:** IF A PURCHASER FAILS TO MAKE PAYMENT AS OUTLINED IN POINT 7 ABOVE ART+OBJECT MAY WITHOUT ANY ADVICE TO THE PURCHASER EXERCISE ITS RIGHT TO: A) RESCIND OR STOP THE SALE, B) RE OFFER THE LOT FOR SALE TO AN UNDERBIDDER OR AT AUCTION. ART+OBJECT RESERVES THE RIGHT TO PURSUE THE PURCHASER FOR ANY DIFFERENCE IN SALE PROCEEDS IF THIS COURSE OF ACTION IS CHOSEN, C) TO PURSUE LEGAL REMEDY FOR BREACH OF CONTRACT.

**9 COLLECTION OF GOODS:** PURCHASED ITEMS ARE TO BE REMOVED FROM ART+OBJECT PREMISES IMMEDIATELY AFTER PAYMENT OR CLEARANCE OF CHEQUES. ABSENTEE BIDDERS MUST MAKE PROVISION FOR THE UPLIFTING OF PURCHASED ITEMS (SEE INSTRUCTIONS ON THE FACING PAGE)

**10 BIDDERS OBLIGATIONS:** THE ACT OF BIDDING MEANS ALL BIDDERS ACKNOWLEDGE THAT THEY ARE PERSONALLY RESPONSIBLE FOR PAYMENT IF THEY ARE THE SUCCESSFUL BIDDER. THIS INCLUDES ALL REGISTERED ABSENTEE OR TELEPHONE BIDDERS. BIDDERS ACTING AS AN AGENT FOR A THIRD PARTY MUST OBTAIN WRITTEN AUTHORITY FROM ART+OBJECT AND PROVIDE WRITTEN INSTRUCTIONS FROM ANY REPRESENTED PARTY AND THEIR EXPRESS COMMITMENT TO PAY ALL FUNDS RELATING TO A SUCCESSFUL BID BY THEIR NOMINATED AGENT.

**11 BIDS UNDER RESERVE & HIGHEST SUBJECT BIDS:** WHEN THE HIGHEST BID IS BELOW THE VENDOR'S RESERVE THIS WORK MAY BE ANNOUNCED BY THE AUCTIONEER AS SOLD ' SUBJECT TO VENDOR'S AUTHORITY' OR SOME SIMILAR PHRASE. THE EFFECT OF THIS ANNOUNCEMENT IS TO SIGNIFY THAT THE HIGHEST BIDDER WILL BE THE PURCHASER AT THE BID PRICE IF THE VENDOR ACCEPTS THIS PRICE. IF THIS HIGHEST BID IS ACCEPTED THEN THE PURCHASER HAS ENTERED A CONTRACT TO PURCHASE THE ITEM AT THE BID PRICE PLUS ANY RELEVANT BUYERS PREMIUM.

## IMPORTANT ADVICE FOR BUYERS

THE FOLLOWING INFORMATION DOES NOT FORM PART OF THE CONDITIONS OF SALE, HOWEVER BUYERS, PARTICULARLY FIRST TIME BIDDERS ARE RECOMMENDED TO READ THESE NOTES.

**(A) BIDDING AT AUCTION:** PLEASE ENSURE YOUR INSTRUCTIONS TO THE AUCTIONEER ARE CLEAR AND EASILY UNDERSTOOD. IT IS WELL TO UNDERSTAND THAT DURING A BUSY SALE WITH MULTIPLE BIDDERS THE AUCTIONEER MAY NOT BE ABLE TO SEE ALL BIDS AT ALL TIMES. IT IS RECOMMENDED THAT YOU RAISE YOUR BIDDING NUMBER CLEARLY AND WITHOUT HESITATION. IF YOUR BID IS MADE IN ERROR OR YOU HAVE MISUNDERSTOOD THE BIDDING LEVEL PLEASE ADVISE THE AUCTIONEER IMMEDIATELY OF YOUR ERROR - PRIOR TO THE HAMMER FALLING. PLEASE NOTE THAT IF YOU HAVE MADE A BID AND THE HAMMER HAS FALLEN AND YOU ARE THE HIGHEST BIDDER YOU HAVE ENTERED A BINDING CONTRACT TO PURCHASE AN ITEM AT THE BID PRICE. NEW BIDDERS IN PARTICULAR ARE ADVISED TO MAKE THEMSELVES KNOWN TO THE SALE AUCTIONEER WHO WILL ASSIST YOU WITH ANY QUESTIONS ABOUT THE CONDUCT OF THE AUCTION.

**(B) ABSENTEE BIDDING:** ART+OBJECT WELCOMES ABSENTEE BIDS ONCE THE NECESSARY AUTHORITY HAS BEEN COMPLETED AND LODGED WITH ART+OBJECT. A+O WILL DO ALL IT CAN TO ENSURE BIDS ARE LODGED ON YOUR BEHALF BUT ACCEPTS NO LIABILITY FOR FAILURE TO CARRY OUT THESE BIDS. SEE THE ABSENTEE BIDDING FORM IN THIS CATALOGUE FOR INFORMATION ON LODGING ABSENTEE BIDS. THESE ARE ACCEPTED UP TO 2 HOURS PRIOR TO THE PUBLISHED AUCTION COMMENCEMENT.

**(C) TELEPHONE BIDS:** THE SAME CONDITIONS APPLY TO TELEPHONE BIDS. IT IS HIGHLY PREFERABLE TO BID OVER A LANDLINE AS THE VAGARIES OF CELLPHONE CONNECTIONS MAY RESULT IN DISAPPOINTMENT. YOU WILL BE TELEPHONED PRIOR TO YOUR INDICATED LOT ARISING IN THE CATALOGUE ORDER. IF THE PHONE IS ENGAGED OR CONNECTION IMPOSSIBLE THE SALE WILL PROCEED WITHOUT YOUR BIDDING. AT TIMES DURING AN AUCTION THE BIDDING CAN BE FRENETIC SO YOU NEED TO BE SURE YOU GIVE CLEAR INSTRUCTIONS TO THE PERSON EXECUTING YOUR BIDS. THE AUCTIONEER WILL ENDEAVOUR TO CATER TO THE REQUIREMENTS OF PHONE BIDDERS BUT CANNOT WAIT FOR A PHONE BID SO YOUR PROMPT PARTICIPATION IS REQUESTED.

# ABSENTEE BID FORM

## AUCTION No 28 11<sup>TH</sup> JUNE 2009 CONTEMPORARY ART + OBJECTS

THIS COMPLETED AND SIGNED FORM AUTHORIZES ART+OBJECT TO BID ON MY BEHALF AT THE ABOVE MENTIONED AUCTION FOR THE FOLLOWING LOTS UP TO PRICES INDICATED BELOW. THESE BIDS ARE TO BE EXECUTED AT THE LOWEST PRICE LEVELS POSSIBLE.

I UNDERSTAND THAT IF SUCCESSFUL I WILL PURCHASE THE LOT OR LOTS AT OR BELOW THE PRICES LISTED ON THIS FORM AND THE LISTED BUYERS PREMIUM FOR THIS SALE (12.5%) AND GST ON THE BUYERS PREMIUM. I WARRANT ALSO THAT I HAVE READ AND UNDERSTOOD AND AGREE TO COMPLY WITH THE CONDITIONS OF SALE AS PRINTED IN THE CATALOGUE.

| LOT NO. | DESCRIPTION | BID MAX |
|---------|-------------|---------|
| _____   | _____       | _____   |
| _____   | _____       | _____   |
| _____   | _____       | _____   |
| _____   | _____       | _____   |
| _____   | _____       | _____   |
| _____   | _____       | _____   |

**PAYMENT AND DELIVERY** ART+OBJECT WILL ADVISE ME AS SOON AS IS PRACTICAL THAT I AM THE SUCCESSFUL BIDDER OF THE LOT OR LOTS DESCRIBED ABOVE. I AGREE TO PAY IMMEDIATELY ON RECEIPT OF THIS ADVICE. PAYMENT WILL BE BY CASH, CHEQUE OR BANK TRANSFER. I UNDERSTAND THAT CHEQUES WILL NEED TO BE CLEARED BEFORE GOODS CAN BE UPLIFTED OR DISPATCHED. I WILL ARRANGE FOR COLLECTION OR DISPATCH OF MY PURCHASES. IF ART+OBJECT IS INSTRUCTED BY ME TO ARRANGE FOR PACKING AND DISPATCH OF GOODS I AGREE TO PAY ANY COSTS INCURRED BY ART+OBJECT. NOTE: ART+OBJECT REQUESTS THAT THESE ARRANGEMENTS ARE MADE PRIOR TO THE AUCTION DATE TO ENSURE PROMPT DELIVERY PROCESSING.

PLEASE INDICATE AS APPROPRIATE BY TICKING THE BOX: PHONE BID  ABSENTEE BID

MR/MRS/MS: \_\_\_\_\_ SURNAME: \_\_\_\_\_

POSTAL ADDRESS: \_\_\_\_\_

STREET ADDRESS: \_\_\_\_\_

BUSINESS PHONE: \_\_\_\_\_ MOBILE: \_\_\_\_\_

FAX: \_\_\_\_\_ EMAIL: \_\_\_\_\_

SIGNED AS AGREED: \_\_\_\_\_

TO REGISTER FOR ABSENTEE BIDDING THIS FORM MUST BE LODGED WITH ART+OBJECT PRIOR TO THE PUBLISHED SALE TIME IN ONE OF THREE WAYS:

1. FAX THIS COMPLETED FORM TO ART+OBJECT +64 9 354 4645
2. EMAIL A PRINTED, SIGNED AND SCANNED FORM TO: [INFO@ARTANDOBJECT.CO.NZ](mailto:INFO@ARTANDOBJECT.CO.NZ)
3. POST TO ART+OBJECT, PO Box 68345 NEWTON, AUCKLAND 1145, NEW ZEALAND

ART+OBJECT 3 ABBEY STREET, NEWTON, AUCKLAND, NEW ZEALAND.  
TELEPHONE +64 9 354 4646, FREEPHONE 0800 80 60 01

# CONTACTS



HAMISH CONEY  
MANAGING DIRECTOR  
HAMISH@ARTANDOBJECT.CO.NZ  
021 509 550



BEN PLUMBLY  
DIRECTOR ART  
BEN@ARTANDOBJECT.CO.NZ  
021 222 8183



JAMES PARKINSON  
DIRECTOR VALUATIONS  
JAMES@ARTANDOBJECT.CO.NZ  
021 222 8184



ROSS MILLAR  
DIRECTOR OBJECTS  
ROSS@ARTANDOBJECT.CO.NZ  
021 222 8185

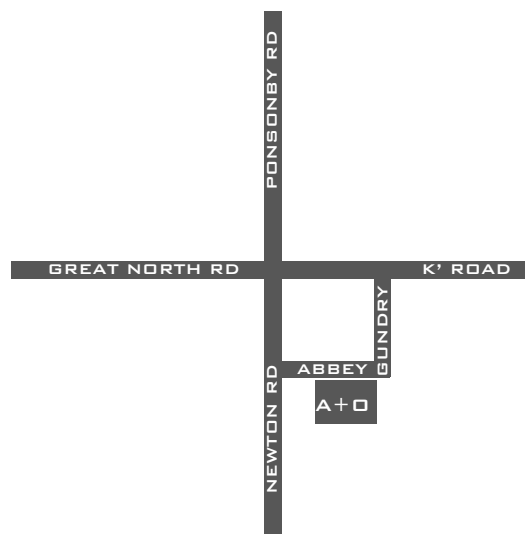


LEIGH MELVILLE  
FRONT OF HOUSE MANAGER  
LEIGH@ARTANDOBJECT.CO.NZ  
09 354 4646



GEORGIE CAUGHEY  
VALUATION CONSULTANT  
09 354 4646

ART + OBJECT  
THE 21<sup>ST</sup> CENTURY AUCTION HOUSE



3 ABBEY STREET,  
NEWTON  
PO BOX 68 345,  
NEWTON  
AUCKLAND 1145,  
NEW ZEALAND

TELEPHONE +64 9 354 4646  
FREEPHONE 0800 80 60 01  
FACSIMILE +64 9 354 4645  
INFO@ARTANDOBJECT.CO.NZ  
WWW.ARTANDOBJECT.CO.NZ

# ARTISTS INDEX

|  |                |                       |                           |
|--|----------------|-----------------------|---------------------------|
| ABERHART, LAURENCE                     | 77, 101, 102   | MITCHELL, SAMANTHA    | 61                        |
| ARNOLD, EVE                            | 100            | MOSES, RUSSELL        | 26                        |
| BRAKE, BRIAN                           | 103            | NOBLE, ANNE           | 78, 79                    |
| L.BUDD                                 | 6              | PARDINGTON, FIONA     | 73, 90, 92                |
| CARR, STEVE                            | 11             | PAREKOWHAI, MICHAEL   | 24, 50, 56, 57, 91, 93    |
| CAUCHI, BEN                            | 96, 97, 99     | PATERSON, REUBEN      | 33                        |
| COUPER, MATTHEW                        | 43             | PERYER, PETER         | 72, 76, 81, 82, 104       |
| DARRAGH, JUDY                          | 36             | PICK, SERAPHINE       | 21, 35                    |
| DASHPER, JULIAN                        | 9, 55, 62      | POPPELWELL, MARTIN    | 45, 58                    |
| DE LAUTOUR, TONY                       | 60, 71         | PULE, JOHN            | 30                        |
| DE LAUTOUR, TONY<br>AND PETER ROBINSON | 51             | REDDAWAY, RICHARD     | 10                        |
| DRIVER, DON                            | 54             | REYNOLDS, JOHN        | 7, 18, 19, 20, 65         |
| DUNNING WILLIAM                        | 25             | RILEY, BILL           | 32                        |
| ET AL.                                 | 37, 38         | ROBINSON ,PETER       | 22, 29                    |
| ELLIOTT, THOMAS                        | 64             | RUDNEVA-MACKAY, LAYLA | 95                        |
| ESLING, SIMON                          | 59             | SCOTT, IAN            | 53                        |
| FFRENCH, DI                            | 88             | SHELTON, ANN          | 80                        |
| FRIEDLANDER, MARTI                     | 83, 87         | SHEPHERD, MICHAEL     | 28                        |
| GRAHAM, BRETT                          | 67             | SINGER, ANGELA        | 3, 12, 13, 14, 15, 16, 17 |
| HARRISON, MICHAEL                      | 49, 68, 69, 70 | SPEERS, JIM           | 5, 40                     |
| HEAPHY, CHRIS                          | 27             | STEVENSON, MICHAEL    | 44                        |
| HOON LEE, JAE                          | 86             | STICHBURY, PETER      | 1                         |
| HUGHES, SARA                           | 39             | STRAKA, HEATHER       | 2                         |
| HUTCHINSON, LONNIE                     | 65             | THOMPSON, ELIZABETH   | 23                        |
| INGRAM, SIMON                          | 42             | TODD, YVONNE          | 74, 75                    |
| INTRA, GIOVANNI                        | 34             | TWEEDIE, MERILYN      | 41                        |
| KAAN, SIMON                            | 31             | FRANCIS UPRITCHARD    | 8, 47                     |
| KREGAR, GREGOR                         | 4              | WALSH, JOHN           | 63                        |
| MADDEN, PETER                          | 98             | WEALLEANS, ROHAN      | 46, 49                    |
| MALDY, RICHARD                         | 84, 85         | WEBSTER, CHRISTINE    | 89, 94                    |
| MILLAR, JUDY                           | 52             |                       |                           |

CONTEMPORARY ART AND OBJECTS  
THURSDAY JUNE 11TH 2009 6.30PM

[WWW.ARTANDOBJECT.CO.NZ](http://WWW.ARTANDOBJECT.CO.NZ)